

# ISI WEB OF KNOWLEDGE<sup>SM</sup> NEW ENHANCEMENTS 2008-2009

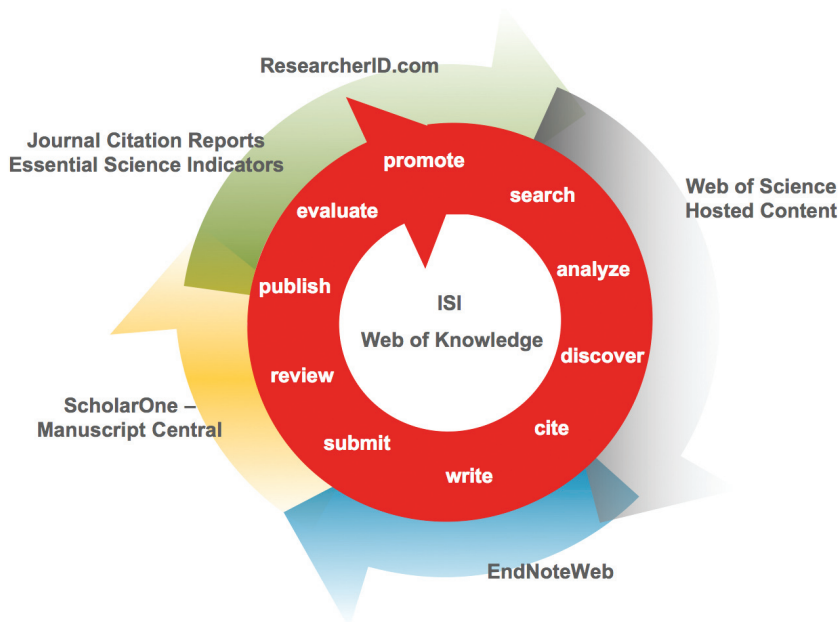
## INTELLIGENT INFORMATION TO ACCELERATE RESEARCH, DISCOVERY AND INNOVATION

Over 20 million researchers at over 3,800 institutions in 98 countries base their research, planning and budget decisions on the content and analytics they find in *ISI Web of Knowledge*.

Here's how we can help you with broader analysis, deeper content and greater convenience!



THOMSON REUTERS



ISI Web of Knowledge hosts 23,000 scholarly journals (including over 10,000 unique titles in Web of Science®), 110,000 proceedings, and 23 million patents.

ISI Web of Knowledge is the world's largest integrated research platform for high quality scholarly contents in the sciences, social sciences, arts and humanities, with access to powerful analytical and visualization tools.

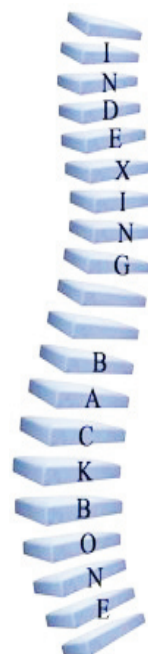
Enhance your search with *Conference Proceedings Citation Index*<sup>TM</sup> now integrated

within *Web of Science*. *Web of Science* also hosts expanded coverage in *Derwent Innovations Index*<sup>SM</sup> and additional content such as *Biosis*, *CAB Abstracts*<sup>®</sup> and *CAB Global Health Database*, *Food Science and Technology Abstracts*<sup>®</sup>, *INSPEC*<sup>®</sup> and *MEDLINE*<sup>®</sup>.

Apart from enhancements released in 2008, you can expect more new features and tools in 2009 to help you improve your discovery, analysis and evaluation process.

## ONE STOP FOR SCHOLARLY INFORMATION

- This seamless and powerful search is enabled by our *Indexing Backbone*, an important system enhancement which automatically consolidates all the different coding/indexing from *ISI Web of Knowledge* databases into a standard system. Hence, a search using this unified coding system will retrieve all records from all databases relevant to your search.



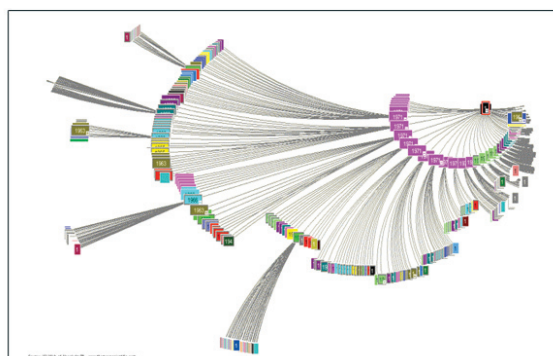
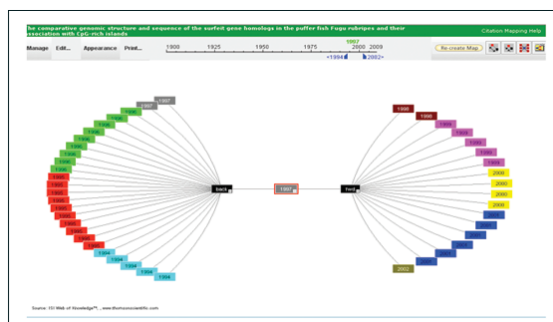
ISI Web of Knowledge provides one single location to meet all your scholarly information needs.

- Citation navigation across all content
- Evaluate and analyze results from all databases relevant to your search via a single interface launched in January 2008

- Full text links
- Intuitive and easy to use



## Citation Map in Web of Science®



Visualize your discovery at a glance!

Create your own interactive citation tree and view forward and backward citations easily. Search for up to two generations and organize and color code results for easier differentiation.

Save as an image for use in other software. You can also limit by date range and enhance title display.

## Funding Acknowledgements in Web of Science®

Funding agency and grant number information are captured since August 2008. This is fully searchable.

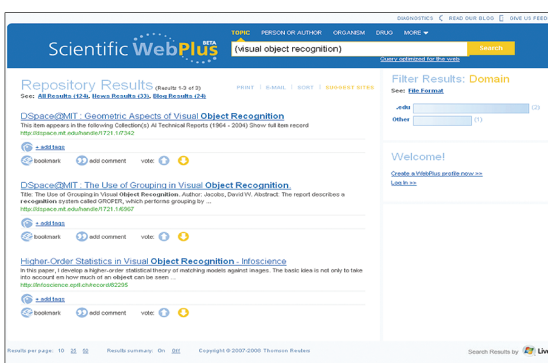
Such funding acknowledgements enable you to identify related or similar projects that are funded privately or publicly. This is useful in determining potential collaborators, competitors and sponsors.

## New Journal Metrics added to Journal Citation Reports®

- Five-year Impact Factor is now available
- Journal Self-Cites displays the contribution of journal self-citations to Impact Factor calculations
- Rank in Category displays journal ranking across multiple categories
- Box Plot graphically shows the dispersion of Impact Factors in each category

- *Eigenfactor™* complements *JCR* indicators and provides additional perspectives in your journal analyses. Visit [www.eigenfactor.org](http://www.eigenfactor.org)

## Scientific WebPlus



Explore data from more than 716 institutional repositories, which are accessible via "Repositories" search results list.

Social search tools enable you to add comments, tags and vote on web sites from your results list for further reference or to share with colleagues and peers.

## Free complementary websites as additional resources:

- New *ScienceWatch* website. Visit [sciencewatch.com](http://sciencewatch.com)
- *BiologyBrowser*. Visit [www.biologybrowser.org](http://www.biologybrowser.org)

## ADDITIONAL CONTENT FOR RESEARCH IN 2009

*ISI Web of Knowledge* continues to expand its scope by adding more useful content for your research, to complement specific domain knowledge, including:

### New links to CAB Abstracts®

- New links to *CAB Abstracts®* plus full-text collections and National Center for Biotechnology information (including full text)
- Addition of *CAB Global Health Database* for public health research

### New releases in 2009

- **New!** *Century of Social Sciences*
- **New!** *BIOSIS Citation Index*
- **New!** *InCites™*

## New! Conference Proceedings Citation Index™

*Conference Proceedings Citation Index (CPCI)*, previously known as *ISI Proceedings*, is now integrated within *Web of Science*.

*CPCI* enables you to differentiate proceeding papers from articles. Conference proceedings are often published as part of regular journals.

*CPCI* provides more than 110,000 conference proceedings from 1990, and cited references and cumulative citation counts from 1999.

*CPCI* makes it possible for you to search easily by conference title, date, sponsor and location.

All conference titles are selected based on rigorous criteria to ensure the quality of overall contents. Visit *Conference Proceedings Selection Process*<sup>3</sup> to find out how you can enhance your search with *CPCI*.

## New! Chinese Science Citation Database



Asia Pacific's research output now represents over a quarter of global research. In particular, the People's Republic of China (PRC) has shown the fastest growth in published papers<sup>4</sup> averaging 17% since 1981.

The *Chinese Science Citation Database (CSCD)*, now available via *ISI Web of Knowledge*, is provided by the prestigious Chinese Academy of Sciences, the national academy of PRC for natural sciences. Membership in the Academy represents the highest level of national honor for Chinese scientists.

*CSCD* editorial policy follows that of *Web of Science* – multidisciplinary, cover-to-cover, inclusive of all authors and addresses plus comprehensive cited references.

More than 1,200 top scholarly journals from PRC are searchable in both English and Chinese, with nearly two million records in total.

Gain access to the fastest growing scientific discoveries by Chinese scientists through *CSCD*.

## CUSTOMER TRAINING AND EDUCATION

Whether you want to get the basics or fine tune your skills, Thomson Reuters can help with a variety of learning opportunities to help you derive immediate and effective usage and knowledge of Scientific products and services. This will help you optimize the features and benefits in your daily workflow.

Please contact your trainer or visit the Global Training Center at [scientific.thomsonreuters.com/training/wok](http://scientific.thomsonreuters.com/training/wok) for more information on *ISI Web of Knowledge* training opportunities.

## CUSTOMER SUPPORT

The goal of Customer Support is to maintain the highest customer satisfaction level possible by providing accurate and timely responses and resolutions to our customers' needs.

Customer Support is available to assist you with questions about Scientific solutions: access, content, searching, general troubleshooting and other technical issues.

Please visit the Global Customer Support Center at [scientific.thomsonreuters.com/support](http://scientific.thomsonreuters.com/support).

3. Visit [isiwebofknowledge.com/products\\_tools/multidisciplinary/webofscience/cpci](http://isiwebofknowledge.com/products_tools/multidisciplinary/webofscience/cpci)  
4. Source: Thomson Reuters, National Science Indicators, 1981-2007. Standard version

**Scientific Regional Head Offices**

**Americas** +1800 336 4474  
Philadelphia +1215 386 0100

**Europe, Middle East and Africa**  
London +44 20 7433 4000

**Asia Pacific**  
Singapore +65 6411 6888  
Tokyo +81 3 5218 6500

For a complete office listing, visit:  
[scientific.thomsonreuters.com/contact](http://scientific.thomsonreuters.com/contact)

[scientific.thomsonreuters.com](http://scientific.thomsonreuters.com)  
[thomsonreuters.com](http://thomsonreuters.com)

**LEARN MORE ABOUT THE ENHANCED ISI WEB OF KNOWLEDGE**

Visit [isiwebofknowledge.com/news/upgrade](http://isiwebofknowledge.com/news/upgrade)

