



Web of ScienceSM

Search

 in

Example: oil spill* mediterranean

 in

Example: O'Brian C* OR OBrian C*

Need help finding papers by an author? Use [Author Finder](#).

 in

Example: Cancer* OR Journal of Cancer Research and Clinical Oncology

[Add Another Field >>](#)

Searches must be in English

Current Limits: (To save these permanently, [sign in or register](#).)

Timespan

All Years (updated 2011-12-30)

From to (default is all years)

Citation Databases

- Science Citation Index Expanded (SCI-EXPANDED) --1899-present
- Social Sciences Citation Index (SSCI) --1898-present
- Arts & Humanities Citation Index (A&HCI) --1975-present
- Conference Proceedings Citation Index- Science (CPCI-S) --1990-present
- Conference Proceedings Citation Index- Social Science & Humanities (CPCI-SSH) --1990-present

Questions about the new Web of Knowledge?

Have questions about differences in citation counts between the new *Web of Knowledge* and the previous version? Notice differences in search capabilities and need more details? See the [Frequently Asked Questions](#) page.

Support, Tools, Tips

Training & Support

- [Download quick Recorded Training](#)
- [Access additional Training Resources](#)
- More questions? Consult the [Help files](#).



What's new in Web of Knowledge?

- Researcher ID is now searchable from within *Web of Science*SM.
- Automatic spelling variations and all new Author Finder in *Web of Science*SM.
- [More of What's New](#)

Featured Tips

- Visualize citation connections at a glance with Citation Mapping ([view demo](#))
- Identify citation trends graphically with Citation Report ([view demo](#)).
- [How to update your Researcher ID profile.](#)

Customize Your Experience

Pantalla ENW URL LOGIN

Opciones de recuperación

- Desde Web of Science / Web of Knowledge
- Desde catálogos de bibliotecas online o base de datos online.
- De forma manual
- Importación de archivos generados desde otra base de datos.
- Captura de referencias a partir de la página Web t

All Databases

Select a Database

Web of Science

Additional Resources

[Search](#) | [Author Finder](#) | [Cited Reference Search](#) | [Structure Search](#) | [Advanced Search](#) | [Search History](#)Web of ScienceSM

Results Address=("inst* tecno*" same mex*)

Timespan=All Years. Databases=SCI-EXPANDED, SSCI, A&HCI, CPCI-S, CPCI-SSH, BKCI-S, BKCI-SSH, CCR-EXPANDED, IC.
Lemmatization=On

 Scientific Web Plus^{BETA}
[View Web Results >>](#)

Results: 3,976

Page 1 of 80 [Go](#) Sort by: Publication Date -- newest to oldest[+ \(0\)](#) | [Print](#) | [Email](#) | Save to: [EndNote Web](#) | [EndNote](#) | [ResearcherID](#)
[more options](#)[Analyze Results](#)
[Create Citation Report](#)

Refine Results

Search within results for

[Search](#)Web of Science Categories [Refine](#)

- ENGINEERING ELECTRICAL ELECTRONIC (436)
- ENGINEERING CHEMICAL (398)
- FOOD SCIENCE TECHNOLOGY (294)
- COMPUTER SCIENCE ARTIFICIAL INTELLIGENCE (282)
- MATERIALS SCIENCE MULTIDISCIPLINARY (185)

[more options / values...](#)

Document Types

- ARTICLE (3,024)
- PROCEEDINGS PAPER
- BOOK CHAPTER (86)
- MEETING ABSTRACT
- REVIEW (62)

[more options / values...](#)

Subject Areas

Authors

1. Title: **Analysis and Design of the Integrated Double Buck-Boost Converter as a High-Power-Factor Driver for Power-LED Lamps**
Author(s): Marcos Alonso J.; Vina Juan; Gacio Vaquero David; et al.
Source: IEEE TRANSACTIONS ON INDUSTRIAL ELECTRONICS Volume: 59 Issue: 4 Pages: 1689-1697 DOI: 10.1109/TIE.2011.2109342 Published: APR 2012
Times Cited: 0 (from Web of Science)
[SFX Demo OpenURL Link](#) [Full Text](#) [[View abstract](#)]
2. Title: **Whitham equation with Landau damping on a half-line**
Author(s): Benitez Felipe; Kaikina Elena I.
Source: JOURNAL OF MATHEMATICAL ANALYSIS AND APPLICATIONS Volume: 387 Issue: 1 Pages:

El sistema nos permite imprimir la información, enviar los registros por correo electrónico, pero lo más importante es que lo podemos exportar a algún software de referencia como EndNote Web o EndNote de escritorio en caso de tenerlo.

Times Cited: 0 (from Web of Science)

[SFX Demo OpenURL Link](#) [Full Text](#) [[View abstract](#)]

Author(s): Diaz-Padilla Gabriel; Sanchez-Cohen Ignacio; Quiroz Roberto, et al.
Source: TECNOLOGIA Y CIENCIAS DEL AGUA Volume: 2 Issue: 4 Pages: 51-64 Published: OCT-DEC 2011

Times Cited: 0 (from Web of Science)

[SFX Demo OpenURL Link](#) [Order Full Text](#) [[+View abstract](#)]

48. Title: [Low-Carbohydrate Diets: A Matter of Love or Hate](#)
Author(s): Frigolet Maria-Eugenia; Ramos Barragan Victoria-Eugenia; Tamez Gonzalez Martha
Source: ANNALS OF NUTRITION AND METABOLISM Volume: 58 Issue: 4 Pages: 320-334 DOI: 10.1159/000331994 Published: OCT 2011
Times Cited: 0 (from Web of Science)
[SFX Demo OpenURL Link](#) [Full Text](#) [[+View abstract](#)]

49. Title: [AC Bipolar Pulsed Power Supply for Reactive Magnetron Sputtering](#)
Author(s): Garcia-Garcia J.; Pacheco-Sotelo J.; Valdivia-Barrientos R.; et al.
Source: IEEE TRANSACTIONS ON PLASMA SCIENCE Volume: 39 Issue: 10 Pages: 1983-1989 DOI: 10.1109/TPS.2011.2162592 Published: OCT 2011
Times Cited: 0 (from Web of Science)
[SFX Demo OpenURL Link](#) [Full Text](#) [[+View abstract](#)]

50. Title: [Words speak louder than money](#)
Author(s): Servatka Maros; Tucker Steven; Vadovic Radovan
Source: JOURNAL OF BUSINESS REVENUE MANAGEMENT Volume: 3 Issue: 4 Pages: 200-209 DOI: 10.1108/JBRM-03-2011-0004

Usted puede seleccionar de uno en uno los registros que necesita recuperar o también puede hacerlo por rangos al final de la página.

Results: 3,976 Show 50 per page Page 1 of 80 Go Sort by: Publication Date -- newest to oldest

Output Records

Step 1:

- Selected Records on page
 All records on page
 Records 1 to 20

Step 2:

- Authors, Title, Source
 plus Abstract
 Full Record
 plus Cited References

Step 3: [How do I export to bibliographic management software?]

- Save to: [EndNote Web](#) [EndNote](#) [ResearcherID](#)
Save to other Reference Software [Save](#)
 (0)

3,976 records matched your query of the 57,362,473 in the data limits you selected.

Key: = Structure available.

View in: [简体中文](#) | [English](#) | [日本語](#)

Processing Records

Please wait while your request is processed.
(Note: Depending on the number of records, this may take a few moments.)

Product: Web of Science

Selected action: Save to My EndNote Web Library

Processing 20 records:

10... 20...Done. ←

- We are contacting your EndNote Web library...

- The records are being sent to your EndNote Web library. They may take a few moments to get there.

◀ Return

Una vez que presionaron el botón para exportar los documentos, usted recibirá un mensaje de confirmación de la recuperación.

Results

Address=("inst* tecno** same mex*)

Timespan=All Years. Databases=SCI-EXPANDED, SSCI, A&HCI, CPCI-S, CPCI-SSH, BKCI-S, BKCI-SSH, CCR-EXPANDED, IC. Lemmatization=On

Results: 3,976

Page 1 of 398 Go

Sort by: Publication Date -- newest to oldest

+ (0) Save to: EndNote Web EndNote ResearcherID

Analyze Results
Create Citation Report

more options

Refine Results

Search within results for

Search

Web of Science Categories Refine

- ENGINEERING ELECTRICAL ELECTRONIC (436)
- ENGINEERING CHEMICAL (398)
- FOOD SCIENCE TECHNOLOGY (294)
- COMPUTER SCIENCE ARTIFICIAL INTELLIGENCE (282)
- MATERIALS SCIENCE MULTIDISCIPLINARY (185)

more options / values...

Document Types Refine

- ARTICLE (3,024)
- PROCEEDINGS PAPER (935)
- BOOK CHAPTER (86)
- MEETING ABSTRACT (71)
- REVIEW (62)

more options / values...

Subject Areas

Authors

Group Authors

Editors

Source Titles

Book Series Titles

Conference Titles

Publication Years

1. Title: **Analysis and Design of the Integrated Double Buck-Boost Converter as a High-Power-Factor Driver for Power-LED Lamps**
 Author(s): Marcos Alonso J.; Vina Juan; Gacio Vaquero David; et al.
 Source: IEEE TRANSACTIONS ON INDUSTRIAL ELECTRONICS Volume: 59 Issue: 4 Pages: 1689-1697 DOI: 10.1109/TIE.2011.2109342 Published: APR 2012
 Times Cited: 0 (from Web of Science)
 SFX Demo OpenURL Link [Full Text](#) [+View abstract]
2. Title: **Whitham equation with Landau damping on a half-line**
 Author(s): Benitez Felipe; Kaikina Elena I.
 Source: JOURNAL OF DIFFERENTIAL EQUATIONS Volume: 2012 Issue: 1 Pages: 359-373 DOI: 10.1155/2012/1254387 Published: JAN 2012
 Times Cited: 0 (from Web of Science)
 SFX Demo OpenURL Link [Full Text](#) [+View abstract]
3. Title: **Analytical solution of the shrinkable food products**
 Author(s): Ruiz-Lopez I. I.; Ruiz-Espinosa H.; Arellanes-Lozada P.; et al.
 Source: JOURNAL OF FOOD ENGINEERING Volume: 108 Issue: 3 Pages: 427-435 DOI: 10.1016/j.jfoodeng.2011.08.025 Published: FEB 2012
 Times Cited: 0 (from Web of Science)
 SFX Demo OpenURL Link [Full Text](#) [+View abstract]
4. Title: **Sorption Behavior of Brilliant Blue FCF by a Fe-Zeolitic Tuff**
 Author(s): Pinedo-Hernandez S.; Diaz-Nava C.; Solache-Rios M.
 Source: WATER AIR AND SOIL POLLUTION Volume: 223 Issue: 1 Pages: 467-475 DOI: 10.1007/s11270-011-0877-7 Published: JAN 2012
 Times Cited: 0 (from Web of Science)
 SFX Demo OpenURL Link [Full Text](#) [+View abstract]
5. Title: **Compact and autonomous multiwavelength microanalyzer for in-line and in situ colorimetric determinations**
 Author(s): da Rocha Zaira M.; Martinez-Cisneros Cynthia S.; Seabra Antonio C.; et al.
 Source: LABORATORY INVESTIGATION Volume: 12 Issue: 1 Pages: 100-117 DOI: 10.1039/c1lc20747d Published:

Los documentos recuperados obtendrán una marca de que ya fueron exportados.

ENDNOTE WEB

Para tener acceso a EndNote Web es necesario haber registrado su usuario.

WEB OF KNOWLEDGE™ | DISCOVERY STARTS HERE

THOMSON REUTERS

Go to mobile site | **Signed In** | Marked List (0) | **My EndNote Web** | My ResearcherID | My Citation Alerts | My Journal List | My Saved Searches | Log Out | Help

All Databases | Select a Database | Web of Science | Additional Resources

Search | Author Finder | Cited Reference Search | Structure Search | Advanced Search | Search History

Web of Science™

Search

Example: O'Brian C* OR OBrian C*
Need help finding papers by an author? Use Author Finder.

Example: Cancer* OR Journal of Cancer Research and Clinical Oncology

Thomson Reuters Sales | MORE INFORMATION FOR NEW USERS

Thomson Reuters Sales | MORE INFORMATION FOR NEW USERS

Support, Tools, Tips

Training & Support

- Download quick Recorded Training
- Access additional Training Resources
- More questions? Consult the Help files.

What's new in Web of Knowledge?

Acceso principal a EndNote Web desde la plataforma de WOK

User Registration: Complete the registration to use EndNote Web by accepting the End User License Agreement.

Please read this Agreement carefully before accessing or using the Thomson Reuters (Scientific) Inc. product known as EndNote Web. By accessing or using EndNote Web, you agree to be bound by the terms and conditions set forth below. If you do not wish to be bound by these terms and conditions, you may not access or use EndNote Web. Thomson Reuters (Scientific) Inc. ("TRSI") may modify this Agreement from time to time upon notice to End User.

1. Definitions

View in [简体中文](#) [English](#) [Deutsch](#) [日本語](#)[Privacy](#) | [Acceptable Use](#) | [Feedback](#)*Published by Thomson Reuters*

Cuando se accede por primera vez a EndNote Web es necesario aceptar los términos y condiciones de uso.

Pantalla principal de bienvenida, para deshabilitarla, clic aquí.

My References

Collect

Organize

Format

Options

[Hide Getting Started Guide](#)

Quick Search

in All My References

My References

All My References (20)

[Unfiled] (20)

Quick List (0)

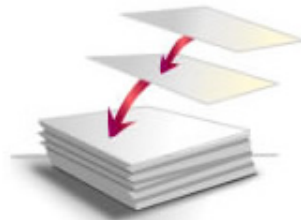
Trash (0)

▼ My Groups

ResearcherID [Learn More](#)

- Unique author identifier
- Generate citation metrics
- Publicize your publications

Getting Started with EndNote Web

**1 collect**

Collect references from electronic and traditional sources.

- Search online database
- Create a reference manually
- Import references

**2 organize**

Organize your references for your research topics and papers.

- Create a new group
- Share a group
- Find duplicate references

**3 Format**

Create a formatted bibliography for your paper or cite references while you write.

- Create a formatted bibliography
- Cite While You Write™ Plug-in
- Format a paper

View in [简体中文](#) [English](#) [Deutsch](#) [日本語](#)[Mobile Site](#) | [Privacy](#) | [Acceptable Use](#) | [Download Installers](#) | [Feedback](#)

© 2012 THOMSON REUTERS

My References

Collect

Organize

Format

Options

Quick Search

in All My References

My References

All My References (20)

[Unfiled] (20)

Quick List (0)

Trash (0)

▼ My Groups

ResearcherID [Learn More](#)

- Unique author identifier
- Generate citation metrics
- Publicize your publications

All My References

La pantalla principal de EndNote Web nos muestra todos los documentos que tenemos almacenados.

Show 10 per page

Page 1 of 2 Annotate PDFs • Edit Styles
Download a free trial today

EndNote X5 for Mac & Win

[Close](#) All Page

Sort by: First Author -- A to Z

 Author **Year** **Title**

- | | | | |
|--------------------------|------------------------|------|--|
| <input type="checkbox"/> | Alexander-Aguilera, A. | 2011 | Dietary n-3 polyunsaturated fatty acids modify fatty acid composition in hepatic and abdominal adipose tissue of sucrose-induced obese rats
Journal of Physiology and Biochemistry
Added to Library: 03 Jan 2012 Last Updated: 03 Jan 2012
WEB OF KNOWLEDGE SM → Source Record , Related Records , |
| <input type="checkbox"/> | Benitez, F. | 2012 | Whitham equation with Landau damping on a half-line
Journal of Mathematical Analysis and Applications
Added to Library: 03 Jan 2012 Last Updated: 03 Jan 2012
WEB OF KNOWLEDGE SM → Source Record , Related Records , |

Bandeja de entrada, aquí llegan todos los documentos que se exportan sin importar el recurso de donde hayan sido recuperados.

Times Cited: 0

Whitham equation with Landau damping on a half-line
Journal of Mathematical Analysis and Applications
Added to Library: 03 Jan 2012 Last Updated: 03 Jan 2012

WEB OF KNOWLEDGESM → [Source Record](#), [Related Records](#),

Times Cited: 0

Cómo crear grupos o carpetas dentro de EndNote Web?

My References

Collect

Organize

Format

Options

Quick Search

 in All My References

My References

All My References (20)

 [Unfiled] (20)

 Quick List (0)

 Trash (0)

 My Groups

 ResearcherID [Learn More](#)

- Unique author identifier
- Generate citation metrics
- Publicize your publications

[Unfiled]

 Show 10 per page

 Page 1 of 2



All



Page

 Sort by: First Author -- A to Z

 Author↑

Year

Title



Alexander-Aguilera, A.

2011

 Dietary n-3 polyunsaturated fatty acids modify fatty acid composition in hepatic and abdominal adipose tissue of sucrose-induced obese rats
 Journal of Physiology and Biochemistry

Added to Library: 03 Jan 2012 Last Updated: 03 Jan 2012

 WEB OF KNOWLEDGESM → [Source Record](#), [Related Records](#),

Times Cited: 0



Alonso, J. M.

2012

 Analysis and Design of the Integrated Double Buck-Boost Converter as a High-Power-Factor Driver for Power-LED Lamps
 Ieee Transactions on Industrial Electronics

Added to Library: 03 Jan 2012 Last Updated: 03 Jan 2012

 WEB OF KNOWLEDGESM → [Source Record](#), [Related Records](#),

Times Cited: 0



Benitez, F.

2012

 Whitham equation with Landau damping on a half-line
 Journal of Mathematical Analysis and Applications

Added to Library: 03 Jan 2012 Last Updated: 03 Jan 2012

 WEB OF KNOWLEDGESM → [Source Record](#), [Related Records](#),

Times Cited: 0



Bermudez-Aguirre, D.

2011

 Study of the inactivation of Escherichia coli and pectin methylesterase in mango nectar under selected high hydrostatic pressure treatments
 Food Science and Technology International

Debe de acceder a la bandeja de entrada y seleccionar los registros que quiere llevar a un grupo nuevo.

My References

Collect

Organize

Format

Options

Hide Panel

Quick Search

in All My References

My References

All My References (20)

[Unfiled] (20)

Quick List (0)

Trash (0)

▼ My Groups

ResearcherID [Learn More](#)

- Unique author identifier
- Generate citation metrics
- Publicize your publications

[Unfiled]

Show 10 per page

Page 1 of 2

 All Page

Copy to Quick List

Add to group...

Add to group...

New group

Author↑ Year Title

- | | | | |
|-------------------------------------|------------------------|------|---|
| <input checked="" type="checkbox"/> | Alexander-Aguilera, A. | 2011 | Dietary n-3 polyunsaturated fatty acids modify fatty acid composition in hepatic and abdominal adipose tissue of sucrose-induced obese rats
Journal of Physiology and Biochemistry
Added to Library: 03 Jan 2012 Last Updated: 03 Jan 2012
WEB OF KNOWLEDGE SM → Source Record , Related Records ,
Times Cited: 0
SFX Demo OpenURL Link |
| <input checked="" type="checkbox"/> | Alonso, J. M. | 2012 | Analysis and Design of the Integrated Double Buck-Boost Converter as a High-Power-Factor Driver for Power-LED Lamps
Ieee Transactions on Industrial Electronics
Added to Library: 03 Jan 2012 Last Updated: 03 Jan 2012
WEB OF KNOWLEDGE SM → Source Record , Related Records ,
Times Cited: 0
SFX Demo OpenURL Link |
| <input checked="" type="checkbox"/> | Benitez, F. | 2012 | Whitham equation with Landau damping on a half-line
Journal of Mathematical Analysis and Applications
Added to Library: 03 Jan 2012 Last Updated: 03 Jan 2012
WEB OF KNOWLEDGE SM → Source Record , Related Records ,
Times Cited: 0
SFX Demo OpenURL Link |
| <input checked="" type="checkbox"/> | Bermudez-Aguirre, D. | 2011 | Study of the inactivation of Escherichia coli and pectin methylesterase in mango nectar under selected high hydrostatic pressure treatments
Food Science and Technology International |

Abra el menú y
seleccione "New
Group"

My References

Collect

Organize

Format

Options

Quick Search

Search for

in All My References

Search

My References

All My References (20)

[Unfiled] (20)

Quick List (0)

Trash (0)

▼ My Groups

ResearcherID Learn More

- Unique author identifier
- Generate citation metrics
- Publicize your publications

[Unfiled]

Show 10 p

▼ All

Copy to

Author

▼

Alexan
Aguilera, A.

...aturated fatty acids modify fatty acid
composition in hepatic and abdominal adipose tissue of sucrose-
induced obese rats
Journal of Physiology and Biochemistry
Added to Library: 03 Jan 2012 Last Updated: 03 Jan 2012
WEB OF KNOWLEDGESM → Source Record, Related Records,
Times Cited: 0

Enter a New Group name and click 'OK'

Institutos Tecnologicos

Aceptar

Cancelar

Debe de aparecer una ventana emergente que le permite escribir el nombre para el nuevo grupo.

En caso contrario, revise la configuración de su navegador, debe de tener las ventanas emergentes habilitadas para este sitio.

Added to Library: 03 Jan 2012 Last Updated: 03 Jan 2012
WEB OF KNOWLEDGESM → Source Record, Related Records,
Times Cited: 0

SFX Demo OpenURL Link

▼

Bermudez-
Aguirre, D. 2011

Study of the inactivation of Escherichia coli and pectin
methylesterase in mango nectar under selected high hydrostatic
pressure treatments
Food Science and Technology International

My References

Collect

Organize

Format

Options

Hide Panel

Quick Search

in

My References

All My References (20)

[Unfiled] (0)

Quick List (0)

Trash (0)

▼ My Groups

Institutos Tecnologicos (20)

Researcher ID [Learn More](#)

- Unique author identifier
- Generate citation metrics
- Publicize your publications

[Unfiled]

There are currently no references stored in this group.

La bandeja de entrada debe de quedar vacía y el nuevo grupo ya creado con el número de referencias seleccionadas.

View in [简体中文](#) | [English](#) | [Deutsch](#) | [日本語](#)[Mobile Site](#) | [Privacy](#) | [Acceptable Use](#) | [Download Installers](#) | [Feedback](#)

© 2012 THOMSON REUTERS



THOMSON REUTERS

Published by Thomson Reuters

Tranferencia de referencias desde catálogos de bibliotecas online o base de datos online.

[My References](#)[Collect](#)[Organize](#)[Format](#)[Options](#)[Online Search](#)[New Reference](#)[Import References](#)

Online Search

Step 1

Select database or library catalog connection.

PubMed (NLM) [Select Favorites](#)

- Pitkin CPL
- Plateau Valley SD
- Point Loma Nazarene U
- Politihogskolen
- Pomona Coll
- Portland ME PL
- Portland St U
- Presentation Coll
- Princeton Theo Sem
- Princeton U
- Principia Coll
- Project MUSE
- Providence Coll
- PubMed (NLM)
- Purdue U-Calumet
- Purdue U-North Central
- Purdue U-W Lafayette
- Queen Margaret U Coll
- Queen Margaret U-Edinburgh
- Queen Mary U of London

La primera es una búsqueda en línea con la cual nos permite conectarnos a diferentes catálogos abiertos sin necesidad de salir de EndNote Web.

En este ejemplo, nos conectaremos a PubMed.

View in [简体中文](#) [English](#) [Deutsch](#) [日本語](#)

[Mobile Site](#) | [Privacy](#) | [Acceptable Use](#) | [Download Installers](#) | [Feedback](#)

© 2012 THOMSON REUTERS



Published by Thomson Reuters

My References

Collect

Organize

Format

Options

Online Search

New Reference

Import References

Online Search

Step 2 of 3: Connecting to PubMed MEDLINE : PubMed (NLM)

<input type="text" value="Lung Cancer"/>	in:	<input type="text" value="Keywords (MeSH)"/>	And
<input type="text" value="smoking"/>	in:	<input type="text" value="Keywords (MeSH)"/>	And
<input type="text"/>	in:	<input type="text" value="Any Field"/>	And
<input type="text"/>	in:	<input type="text" value="Any Field"/>	

- retrieve all records
 select a range of records

- Any Field
- Any Field
- Author (Smith AB)
- Author Affiliation
- Year
- Title
- Journal
- Volume
- Issue
- Page Number
- Keywords (MeSH)
- MeSH Major Topic
- Personal Name as Subject
- Abstract
- Language
- Subheading
- Corporate Name
- Substance Name
- Publication Type
- Publication Date
- Date Entered (yyyy/mm/dd)

Usted puede realizar diferentes búsquedas por diferentes campos utilizando los menús desplegables.

View in [简体中文](#) [English](#) [Deutsch](#) [Español](#)[Mobile Site](#) | [Privacy](#) | [Acceptable Use](#) | [Download Installers](#) | [Feedback](#)

© 2012 THOMSON REUTERS



THOMSON REUTERS

Published by Thomson Reuters

My References

Collect

Organize

Format

Options

Online Search

New Reference

Import References

Online Search

Step 3 of 3: Connecting to PubMed MEDLINE : PubMed (NLM)

((Lung Cancer) in Keywords (MeSH)) and ((smoking) in Keywords (MeSH))

Found 8311 results:

Retrieve through

Retrieve

Seleccione la cantidad de registros que desea recuperar del total de documentos localizados. Presione el botón amarillo para continuar.

View in [简体中文](#) | [English](#) | [Deutsch](#) | [日本語](#)

[Mobile Site](#) | [Privacy](#) | [Acceptable Use](#) | [Download Installers](#) | [Feedback](#)

© 2012 THOMSON REUTERS



THOMSON REUTERS

Published by Thomson Reuters

My References

Collect

Organize

Format

Options

Online Search

New Reference

Import References

Quick Search

in All My References

My References

All My References (25)

[Unfiled] (0)

Quick List (0)

Trash (0)

▼ My Groups

Academic OneFile (5)

Institutos Tecnologicos (20)

ResearcherID Learn More

- Unique author identifier
- Generate citation metrics
- Publicize your publications

Online Search Results

PubMed MEDLINE 1 - 10 of 10 results

((Lung Cancer) in Keywords (MeSH)) and ((smoking) in Keywords (MeSH))

Show 10 per page

Page 1 of 1

(All results retrieved)

<input checked="" type="checkbox"/>	All	<input type="checkbox"/>	Page		
<input checked="" type="checkbox"/>	Hagley, K. E.	2011	-	and non-communicable diseases controlling the epidemic.	West Indian Med J Online Link→ Go to URL SFX Demo OpenURL Link
<input checked="" type="checkbox"/>	Hymowitz, N.	2011	-	Smoking and cancer: a review of public health and clinical implications.	J Natl Med Assoc Online Link→ Go to URL SFX Demo OpenURL Link
<input checked="" type="checkbox"/>	Mets, O. M.	2011	-	Identification of chronic obstructive pulmonary disease in lung cancer screening computed tomographic scans.	JAMA Online Link→ Go to URL
<input checked="" type="checkbox"/>	Brock, S.	2011	-		
<input checked="" type="checkbox"/>	Zhang, X.	2011	-		Online Link→ Go to URL SFX Demo OpenURL Link
<input checked="" type="checkbox"/>	Hsia, T. C.	2011	-	Interaction of CCND1 genotype and smoking habit in Taiwan	

- Add to group...
- Add to group...
- Academic OneFile
- Institutos Tecnologicos
- [Unfiled]
- New group

Los resultados se muestran en pantalla y los puede llevar a un grupo existente o crear uno nuevo.

My References

Collect

Organize

Format

Options

Online Search

New Reference

Import References

Quick Search

Search for

in All My References

Search

My References

All My References (35)

[Unfiled] (0)

Quick List (0)

Trash (0)

▼ My Groups

Academic OneFile (5)

Institutos Tecnologicos (20)

PubMed (10)

ResearcherID Learn More

- Unique author identifier
- Generate citation metrics
- Publicize your publications

Online Search Results

PubMed MEDLINE 1 - 10 of 10 results

((Lung Cancer) in Keywords (MeSH)) and ((smoking) in Keywords (MeSH))

Show 10 per page



Page 1 of 1

Go



(All results retrieved)

 All Page

Author	Year	Copied	Title
<input type="checkbox"/> Hagley, K. E.	2011	✓	Tobacco and non-communicable diseases controlling the tobacco epidemic. West Indian Med J Online Link→ Go to URL SFX Demo OpenURL Link
<input type="checkbox"/> Hymowitz, N.	2011	✓	Smoking and cancer: a review of public health and clinical implications. J Natl Med Assoc Online Link→ Go to URL SFX Demo OpenURL Link
<input type="checkbox"/> Mets, O. M.	2011	✓	Identification of chronic obstructive pulmonary disease in lung cancer screening computed tomographic scans. JAMA Online Link→ Go to URL SFX Demo OpenURL Link
<input type="checkbox"/> Brock, S.	2011	✓	UK tobacco firms behind cancer export drive. BMJ Online Link→ Go to URL SFX Demo OpenURL Link
	2011	✓	Estimating cancer incidence in Indigenous Australians. Aust N Z J Public Health Online Link→ Go to URL SFX Demo OpenURL Link
<input type="checkbox"/> Hsia, T. C.	2011	✓	Interaction of CCND1 genotype and smoking habit in Taiwan

Los documentos fueron copiados a un grupo nuevo según nuestra elección anterior.

Cómo almacenar referencias en forma manual?

My References

Collect

Organize

Format

Options

Online Search

New Reference

Import References

Quick Search

in All My References

My References

All My References (35)

[Unfiled] (0)

Quick List (0)

Trash (0)

▼ My Groups

Academic OneFile (5)

Institutos Tecnologicos (20)

PubMed (10)

ResearcherID [Learn More](#)

- Unique author identifier
- Generate citation metrics
- Publicize your publications

New Reference

Bibliographic Fields:

Reference Type:

Book

Author:

Use format Last Name, First name. Enter each name on a new line.

Title:

Year:

Series Editor:

Series Title:

Place Published:

Publisher:

Volume:

Number of Volumes:

Series Volume:

Number of Pages:

Pages:

Editor:

Edition:

Note: The above fields are needed for most bibliographic styles.

Para ingresar datos de una referencia en forma manual, solo debe de llenar el formulario con la mayor cantidad de datos posibles y guardarla dentro de alguno de sus grupos existentes.

Importación de archivos generado desde otra base de datos.

Academic OneFile

INFOTRAC

global warming



BÚSQUEDA BÁSICA | BÚSQUEDA POR GUÍA DE TEMAS | BÚSQUEDA POR PUBLICACIÓN | BÚSQUEDA AVANZADA | BÚSQUEDAS ANTERIORES

Expandir/Limitar



a documentos de texto completo

a documentos con imágenes

Tipos de contenido

[Publicaciones académicas](#) (5774)

[Revistas](#) (9335)

[Libros](#) (91)

[Noticias](#) (17076)

[Imágenes](#) (101)

[Videos](#) (121)

[Artículos de audio](#) (877)

Limitar búsqueda por

TEMAS RELACIONADOS:

[global warming](#) (3230)

[Climate change](#) (750)

[air pollution](#) (419)

[Greenhouse gases](#) (405)

[Environmental policy](#) (337)

[Ver más](#)

TIPOS DE DOCUMENTOS:

Guardar todo

Ordenar por: Fecha de publicación (descendente)

9335 Revista Resultados de [Búsqueda básica](#) Palabra clave (global warming) LIMITS: Con texto completo

1. [Self-reliance requires sacrifice](#). Milton Takei. Brief article , Letter to the editor
Earth Island Journal. 26.4 (Winter 2012)
p3. Número de palabras: 172.

I agree with Derrick Jensen, that people in India or Peru need access to their own food ("C... 2011). However, a means that people



2. [Polar express](#).
Earth Island Journal.
414.

For centuries, sailors and explorers searched futilely for the Northwest Passage a hoped for sea-lane that would allow ships to go northward between the Atlantic and Pacific Oceans. Now, thanks to global warming, the ...



3. [Simpson, Helen: IN-FLIGHT ENTERTAINMENT](#). Book review , Brief article
Kirkus Reviews. (Jan. 1, 2012) Número de palabras: 340.

Simpson, Helen IN-FLIGHT ENTERTAINMENT Knopf (Adult Fiction) \$24.00 2, 21 ISBN: 978-0-307-59558-4 Short and sharp, the latest stories from the award-winning British author are as pointed as ever, with many of them ...

Documentos guardados(5)

Ver todo

[Self-reliance requires sacrifice](#)

[Polar express](#)

[Simpson, Helen: IN-FLIGHT ENTERTAINMENT](#)

Lo primero es tener resultados y seleccionar los que se quieran exportar a EndNote Web.

Posteriormente ir a la lista de registros seleccionados o marcados.



Videos relacionados

Ver todo

[Global Warming Melting the Himalayas...](#)

[BÚSQUEDA BÁSICA](#)[BÚSQUEDA POR GUÍA DE TEMAS](#)[BÚSQUEDA POR PUBLICACIÓN](#)[BÚSQUEDA AVANZADA](#)[BÚSQUEDAS ANTERIORES](#)**Documentos guardados (5)**[Volver a resultados anteriores](#) [Eliminar todos los documentos guardados](#)

[Self-reliance requires sacrifice](#). Milton Takei. Brief article ,
[Earth Island Journal](#). 26.4 (Winter 2012) Letter to the
p3. Número de palabras: 172. editor

I agree with DerrickJensen that people in India or Peru need access to land so that they can grow their own food ("Can't Buy Me Change," Autumn 2011). However, a strategy of self-reliance means that people might need to



[Polar express](#). Article
[Earth Island Journal](#). 26.4 (Winter 2012) p6. Número de palabras:
414.

Herramientas [Imprimir](#) [Correo electrónico](#) [Herramientas de citas](#) [Marcador](#) [Descargar \(5\)](#)

En todos los recursos funciona igual pero puede tener diferentes nombres, es decir, podríamos localizar funciones como:

1. Exportar
2. Enviar
3. Guardar
4. Herramientas de citas
5. Otros.

978-0-307-59558-4 Short and sharp, the latest stories from the award-winning British author are as pointed as ever, with many of them



Generar una cita

Nota: Si bien los elementos de los datos de las siguientes citas tienen el formato necesario para cumplir con las últimas normas estándar de citas indicadas por las agencias correspondientes, estas citas incluyen los datos de publicación disponibles del documento citado y deben servir solamente como orientación y no como un reemplazo de las últimas guías, o aquellos solicitados por su instructor. Consulte los ejemplos proporcionados para obtener el formato correcto. Gale no provee ni admite software de generación de citas bibliográficas de terceros.

Guardar

Séptima edición de la MLA (Modern Language Association) [Ejemplo](#)

APA (American Psychological Association) [Ejemplo](#)

Guardar

Cancelar

Exportar a software de terceros:

EndNote

ProCite

Administrador de referencias

RefWorks

Exportar

Cancelar

A continuación debe seleccionar la opción EndNote y presionar el botón "Exportar".

Artículos**Tipo de documento****1. Self-reliance requires sacrifice.**

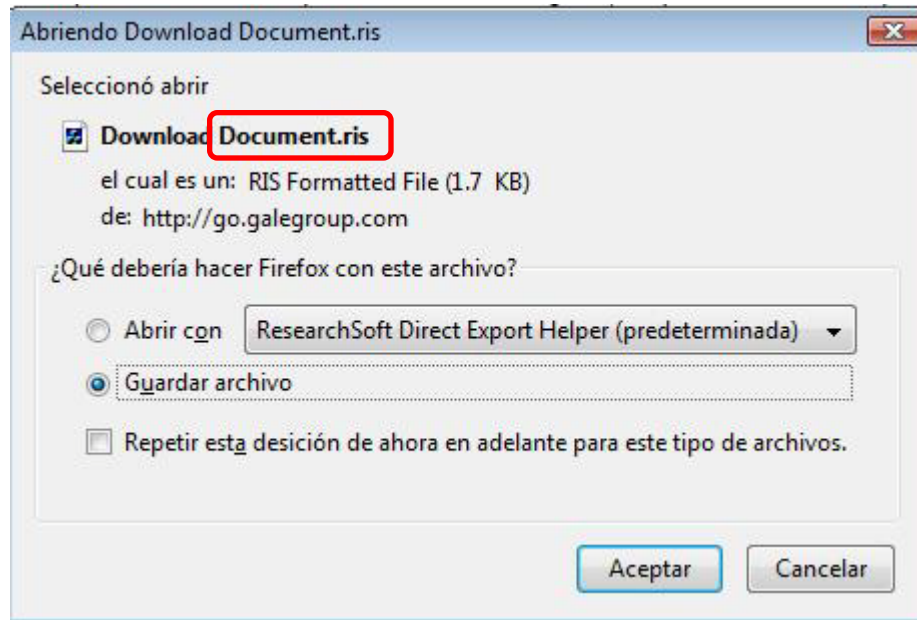
Milton Takei. Earth Island Journal. 26.4 (Winter 2012) p3. Número de palabras: 172.

I agree with Derrick Jensen that people in India or Peru need access to land so that they can grow their own food ("Can't Buy Me Change," Autumn 2011). However, a strategy of self-reliance means that people might need to

Brief article ,
Letter to the
editor

2. Polar express.

Article



Lo más importante de todo es que el archivo se guarde con formato "RIS", ese es el estándar de EndNote.

Lo puede descargar al "Escritorio" o "Mis documentos".

[My References](#)[Collect](#)[Organize](#)[Format](#)[Options](#)[Online Search](#)[New Reference](#)[Import References](#)

Import References

Importing from EndNote?

File:

Import Option:

To:

Debe de estar situado en el tabulador de recolección de información; en la opción "Import References" y llenar los datos que se solicitan.

View in [简体中文](#) [English](#) [Deutsch](#) [日本語](#)

[Mobile Site](#) | [Privacy](#) | [Acceptable Use](#) | [Download Installers](#) | [Feedback](#)

© 2012 THOMSON REUTERS



THOMSON REUTERS

Published by Thomson Reuters

My References

Collect

Organize

Form

[Online Search](#)[New Reference](#)[Import References](#)

Import References

Importing from EndNote?

File: C:\Users\Familia\Downloads\Academic Import Option: RefMan RIS [Select Favorites](#)To:

- Institutos Tecnologicos
[Unfiled]
New group

Archivo almacenado con extensión .RIS
Fue guardado en el escritorio o en mis documentos

Obligatoriamente debe seleccionar
el tipo de archivo: RefMan RIS

Si lo desea, puede crear un grupo nuevo
o importar las referencias a uno ya
existente.

[View in](#) [简体中文](#) [English](#) [Deutsch](#) [日本語](#)[Mobile Site](#) | [Privacy](#) | [Acceptable Use](#) | [Download Installers](#) | [Feedback](#)

© 2012 THOMSON REUTERS



THOMSON REUTERS

Published by Thomson Reuters

My References

Collect

Organize

Format

Options

Online Search

New Reference

Import References

Import References

Importing from EndNote?

File: C:\Users\Familia\Downloads\Academic

Import Option: RefMan RIS

To: New group

Import

Enter a New Group name and click 'OK'

Academic OneFile

Aceptar

Cancelar

En caso de haber seleccionado un grupo nuevo, escriba el nombre y presione el botón aceptar.

View in | 繁体中文 | English | Deutsch | 日本語

[Mobile Site](#) | [Privacy](#) | [Acceptable Use](#) | [Download Installers](#) | [Feedback](#)

© 2012 THOMSON REUTERS



THOMSON REUTERS

Published by Thomson Reuters

My References

Collect

Organize

Format

Options

[Online Search](#)[New Reference](#)[Import References](#)

Import References

5 references were imported into "Academic OneFile" group.

Importing from EndNote?

File:

Import Option: [Select Favorites](#)

To:

Recibirá un mensaje de confirmación de que sus referencias fueron almacenadas y el grupo fue creado.

View in [简体中文](#) | [English](#) | [Deutsch](#) | [日本語](#)

[Mobile Site](#) | [Privacy](#) | [Acceptable Use](#) | [Download Installers](#) | [Feedback](#)

© 2012 THOMSON REUTERS



THOMSON REUTERS

Published by Thomson Reuters

Formato de las referencias

My References

Collect

Organize

Format

Options

Bibliography

Cite While You Write Plug-In

Format Paper

Export References

Bibliography

References: - Institutos Tecnologicos

Bibliographic style: APLAR J Rheumatology [Select Favorites](#)

File format:

- Antarctic Science
- Anthropology Today
- Anthropos
- Antimicrobial Agents Chemo
- Antipode
- Antiviral Therapy
- APA 5th(CDU)
- APA 5th-Annotated
- APA 5th
- APA 6th
- APLAR J Rheumatology
- Apoptosis
- App Animal Behaviour Sci
- App Cognitive Psychology
- App Comp Harm Analysis
- App Health Eco Health Pol
- App Phys Letters
- APPI
- Appl Psych Measurement
- Applied Catalysis A

Seleccione el grupo donde se encuentra la información.

Seleccione el estilo bibliográfico que desea utilizar.

Biosciences	CSE Style Manual C-S or N-Y
Science	Harvard
Chemistry	ACS
Engineering	IEEE
Humanities	Chicago 15th A or B
Humanities	Turabian
General	Annotated
General	Author-Date
Language and Linguistics	MLA
Medicine	JAMA
Medicine	NLM
Medicine	Vancouver or UNIFORM Requirements
Psychology	APA 6th
Sociology	ASA Style Guide
Physics/Chemistry	AIP Style Manual 4th Edition

View in [简体中文](#) [English](#) [Deutsch](#) [日本語](#)[Mobile Site](#) | [Privacy](#) | [Acceptable Use](#) | [Download Installers](#) | [Feedback](#)

Welcome Luis

Permitir abrir ventanas emergentes a www.myendnoteweb.com
 Editar opciones de bloqueo de ventanas emergentes...
 No mostrar este mensaje cuando se bloqueen ventanas emergentes
 Mostrar 'http://www.myendnoteweb.com/EndNoteWeb.html?func=preview+Print...'

Bibliography

References: - Institutos Tecnologicos

Bibliographic style: APA 6th [Select Favorites](#)

File format: HTML

[Save](#) [E-Mail](#) [Preview & Print](#)

Si al momento de presionar el botón "Preview" no le muestra la información, es porque las ventanas emergentes están bloqueadas.

Asegúrese de permitir las en este sitio web.

Examples of Commonly Used Styles

Area of Study	Writing Style Guides
Biosciences	CSE Style Manual C-S or N-Y
Science	Harvard
Chemistry	ACS
Engineering	IEEE
Humanities	Chicago 15th A or B
Humanities	Turabian
General	Annotated
General	Author-Date
Language and Linguistics	MLA
Medicine	JAMA
Medicine	NLM
Medicine	Vancouver or UNIFORM Requirements
Psychology	APA 6th
Sociology	ASA Style Guide
Physics/Chemistry	AIP Style Manual 4th Edition

- Alexander-Aguilera, A., Berruezo, S., Hernandez-Diaz, G., Angulo, O., & Oliart-Ros, R. (2011). Dietary n-3 polyunsaturated fatty acids modify fatty acid composition in hepatic and abdominal adipose tissue of sucrose-induced obese rats. [Article]. *Journal of Physiology and Biochemistry*, 67(4), 595-604. doi: 10.1007/s13105-011-0106-2
- Alonso, J. M., Vina, J., Vaquero, D. G., Martinez, G., & Osorio, R. (2012). Analysis and Design of the Integrated Double Buck-Boost Converter as a High-Power-Factor Driver for Power-LED Lamps. [Article]. *Ieee Transactions on Industrial Electronics*, 59(4), 1689-1697. doi: 10.1109/tie.2011.2109342
- Benitez, F., & Kaikina, E. I. (2012). Whitham equation with Landau damping on a half-line. [Article]. *Journal of Mathematical Analysis and Applications*, 387(1), 359-373. doi: 10.1016/j.jmaa.2011.09.015
- Bermudez-Aguirre, D., Guerrero-Beltran, J. A., Barbosa-Canovas, G. V., & Welti-Chanes, J. (2011). Study of the inactivation of Escherichia coli and pectin methylesterase in mango nectar under selected high hydrostatic pressure treatments. [Article]. *Food Science and Technology International*, 17(6), 541-547. doi: 10.1177/1082013211399681
- Cardenas-Maciel, S. L., Castillo, O., & Aguilar, L. T. (2011). Generation of walking periodic motions for a biped robot via genetic algorithms. [Article]. *Applied Soft Computing*, 11(8), 5306-5314. doi: 10.1016/j.asoc.2011.05.030
- Catano-Barrera, A. M., Figueira, F. L., Olivera-Fuentes, C., & Colina, C. M. (2011). Correlation and prediction of fluid-fluid equilibria of carbon dioxide-aromatics and carbon dioxide-dichlorobenzoates binary mixtures. [Article]. *Fluid Phase Equilibria*, 311, 45-53. doi: 10.1016/j.fluid.2011.08.027
- da Rocha, Z. M., Martinez-Cisneros, C. S., Seabra, A. C., Valdes, F., Gongora-Rubio, M. R., & Alonso-Chamarro, J. (2012). Compact and autonomous multiwavelength microanalyzer for in-line and in situ colorimetric determinations. [Article]. *Lab on a Chip*, 12(1), 109-117. doi: 10.1039/c1lc20747d
- De Santiago-Miramontes, M. A., Luna-Orozco, J. R., Meza G., & Mellado, M. (2011). The effect of flushing and of anovulatory-range goats. [Article]. *Tropical Animal Health and Production*, 43(9), 1899-1909. doi: 10.1007/s11250-011-9849-6
- Espana-Gamboa, E., Mijangos-Cortes, J., Barahona-Perez, L., Dominguez-Maldonado, J., Hernandez-Zarate, G., & Alzate-Gaviria, L. (2011). Vinasses: characterization and treatments. [Review]. *Waste Management & Research*, 29(12), 1235-1250. doi: 10.1177/0734242x10387313
- Gutierrez-Martinez, P., Osuna-Lopez, S. G., Calderon-Santoyo, M., Cruz-Hernandez, A., & Bautista-Banos, S. (2012). Influence of ethanol and heat on disease control and quality in stored mango fruits. [Article]. *Lwt-Food Science and Technology*, 45(1), 20-27. doi: 10.1016/j.lwt.2011.07.033

ENW convertirá las referencias al estilo bibliográfico que haya seleccionado.

Cita mientras escribes (Cite While You Write)

[My References](#)[Collect](#)[Organize](#)[Format](#)[Options](#)[Bibliography](#)[Cite While You Write Plug-In](#)[Format Paper](#)[Export References](#)

Cite While You Write Plug-In

Use the EndNote Web Plug-in to insert references, and format citations and bibliographies automatically while you write your papers in Word. The EndNote Web Plug-in also allows you to save online references to your library in Internet Explorer for Windows.

See [Installation Instructions](#) and [System Requirements](#).

- [Download Windows](#) with Internet Explorer plug-in
- [Download Macintosh](#)

Una de las funciones principales de ENW es poder insertar las referencias aquí almacenadas en sus textos directamente en forma de citas.

Primero debe descargar el controlador o plug-in ya sea para Sistema Operativo Windows o Macintosh.

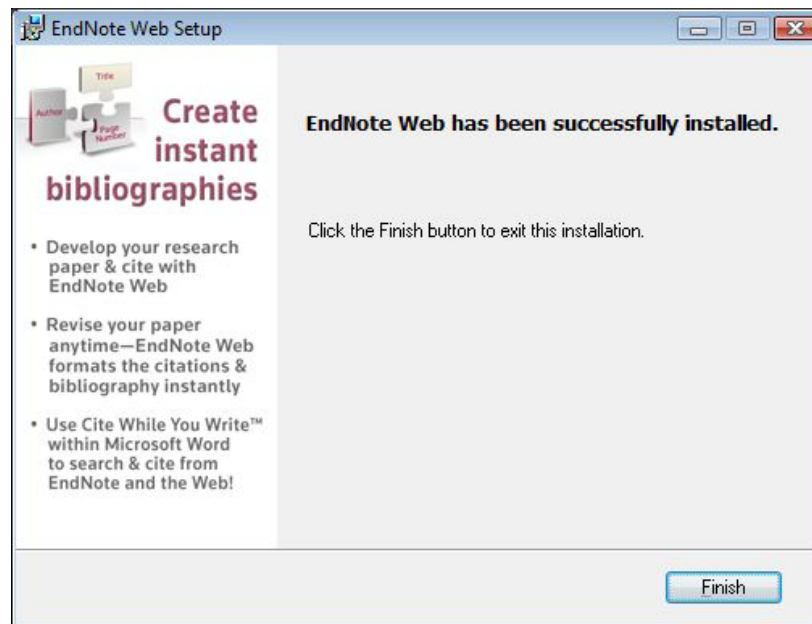
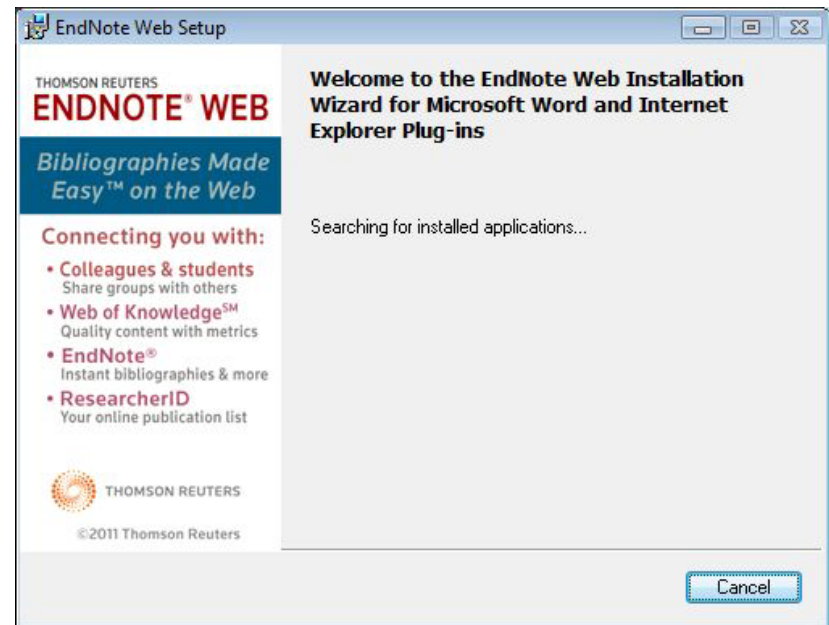
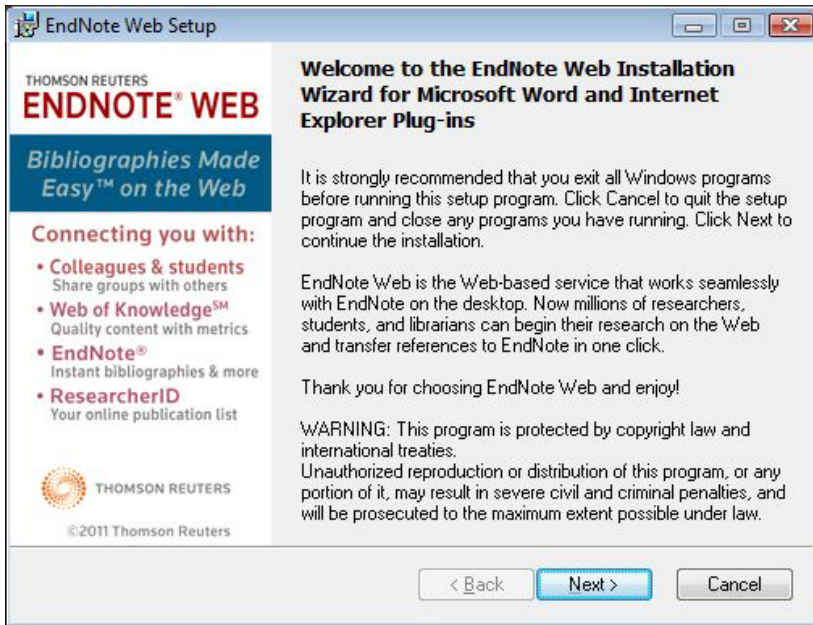
Descargue e instale en su computadora.

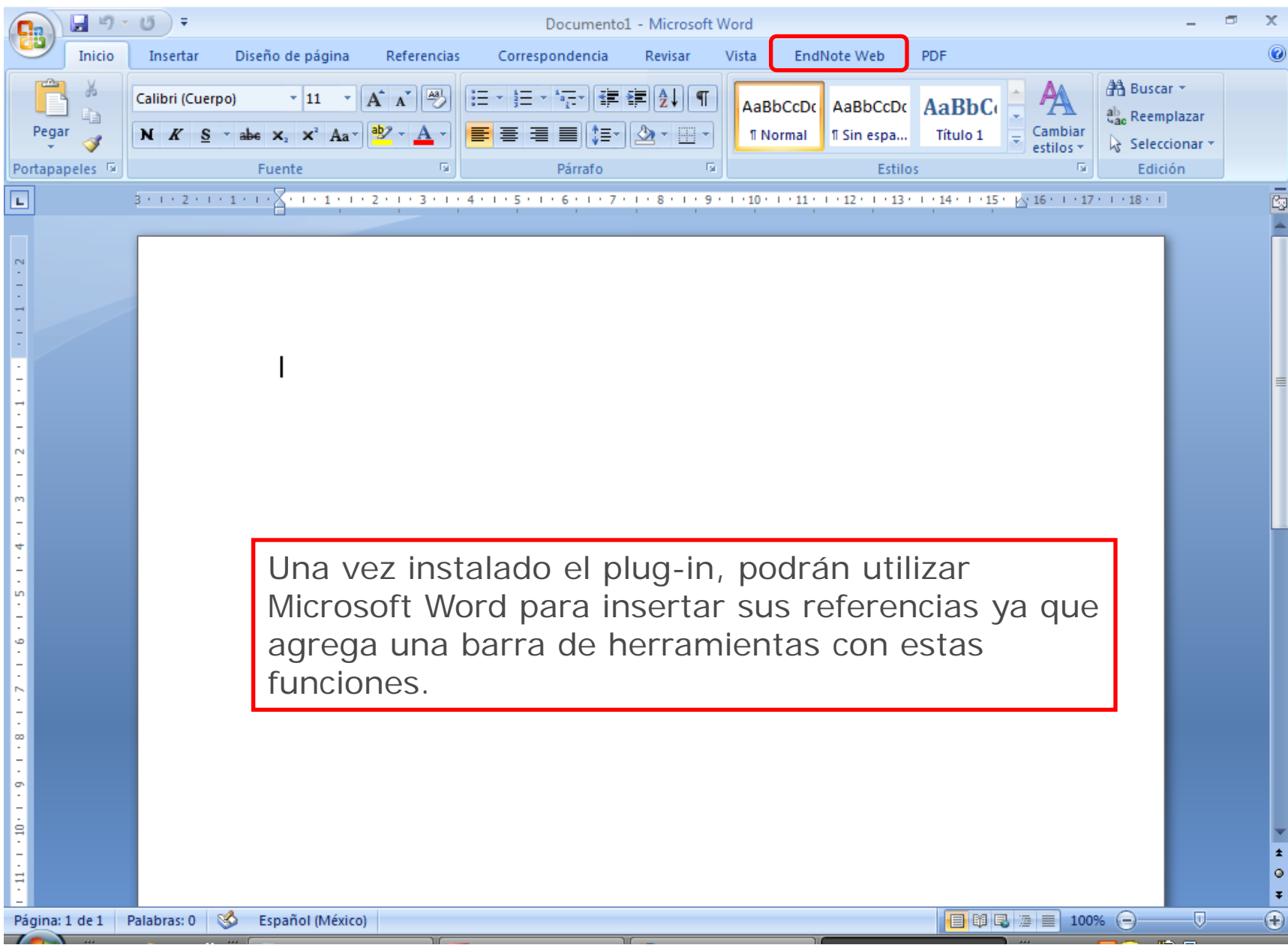
© 2012 THOMSON REUTERS



THOMSON REUTERS

Published by Thomson Reuters





The image shows a screenshot of the Microsoft Word interface with the EndNote Web ribbon selected. The ribbon contains several groups of options: Citations (Find Citations, EndNote Web Citations, Go to EndNote Web Citations, Edit Citation(s)), Bibliography (Update Citations and Bibliography, Convert Citations and Bibliography), Tools (Export to EndNote Web, Preferences, EndNote Web Help), and PDF. A red arrow points to the 'EndNote Web' tab. In the center of the document, a dialog box titled 'EndNote Web Login' is open, prompting for an 'E-mail address' (luis_serrano@soloprueba.com) and a 'Password' (represented by dots). Below the password field is a link that says 'Sign Up for an account - it's fast and easy!'. At the bottom of the document, a red-bordered box contains the following text:

Al momento de querer utilizar la barra, el sistema le pedirá su usuario y su clave de ENW. Con esto usted logrará la conexión y la inserción de las referencias directamente en su texto.

The Windows taskbar at the bottom shows the system tray with the time 06:24 p.m. and the language set to Español (México). The taskbar also shows several open applications, including conricyt2012, Microsoft Office Pi..., EndNote Web 3.3, and Documento1 - Mi...

Documento1 - Microsoft Word

Inicio Insertar Diseño de página Referencias Correspondencia Revisar Vista EndNote Web PDF

Find Citations EN Web Go to EndNote Web Edit Citation(s) Citations

Style: Nature

Export to EndNote Web

Update Citations and Bibliography

Preferences

Convert Citations and Bibliography

EndNote Web Help

Bibliography Tools

Para insertar una referencia solo debo utilizar la barra, el primer botón me permite localizarla dentro de mi ENW

Página: 1 de 1 Palabras: 0 Español (México) 100%

EndNote Web Find & Insert My References

inst tecno Find

Author	Year	Title
Alexander-Aguilera	2011	Dietary n-3 polyunsaturated fatty acids modify fatty acid composition in hepatic and abdominal adipose tissue of
Alonso	2012	Analysis and Design of the Integrated Double Buck-Boost Converter as a High-Power-Factor Driver for Power-LE
Benitez	2012	Whitham equation with Landau damping on a half-line
Bermudez-Aguirre	2011	Study of the inactivation of Escherichia coli and pectin methylesterase in mango nectar under selected high hydr
Cardenas-Maciel	2011	Generation of walking periodic motions for a biped robot via
Catano-Barrera	2011	Correlation and prediction of fluid-fluid equilibria of carbon d
da Rocha	2012	Compact and autonomous multiwavelength microanalyzer for
De Santiago-Mira...	2011	The effect of flushing and stimulus of estrogenized does on
Espana-Gamboa	2011	Vinasses: characterization and treatments
Gutierrez-Martinez	2012	Influence of ethanol and heat on disease control and quality
Jimenez-Lam	2011	Influence of Supported Gold on the Dynamics of Reduction and Crystallization of Iron Oxides: A Dispersive X-ray
Martinez-Sibaja	2011	Volumetric gas meter for laboratory-scale anaerobic bioreactors
Ortiz-Muniz	2012	Measurement in ethanol production using acoustical de-Script structure of wild type yeast Saccharomyces...

Reference Type: Journal Article
Author: Catano-Barrera, A. M.
Figueira, F. L.
Olivera-Fuentes, C.
Colina, C. M.
Year: 2011
Title: Correlation and prediction of fluid-fluid equilibria of carbon dioxide-aromatics and carbon dioxide-dichlorobenzoates binary mixtures
Journal: Fluid Phase Equilibria
Volume: 311
Pages: 45-53
Date: Dec

Insert Cancel Help

Library: EndNote Web 20 items in list

Primero busco la referencia, luego la selecciono y por último presiono el botón insertar.

Document1 - Microsoft Word

Inicio Insertar Diseño de página Referencias Correspondencia Revisar Vista EndNote Web PDF

Find Citations EndNote Web Citations Edit Citation(s) Citations

Style: APA 6th

Export to EndNote Web

Update Citations and Bibliography

Convert Citations and Bibliography

Preferences

EndNote Web Help

Tools

Repita el proceso la cantidad de veces necesarias a lo largo de todo el trabajo.

(Catano-Barrera, Figueira, Olivera-Fuentes, & Colina, 2011)

(Ruiz-Lopez, Ruiz-Espinosa, Arellanes-Lozada, Barcenos-Pozos, & Garcia-A

(Alonso, Vina, Vaquero, Martinez, & Osorio, 2012)

Alonso, J. M., Vina, J., Vaquero, D. G., Martinez, G., & Osorio, R. (2012). Analysis and Design of the Integrated Double Buck-Boost Converter as a High-Power-Factor Driver for Power-LED Lamps. [Article]. *Ieee Transactions on Industrial Electronics*, 59(4), 1689-1697. doi: 10.1109/tie.2011.2109342

Catano-Barrera, A. M., Figueira, F. L., Olivera-Fuentes, C., & Colina, C. M. (2011). Correlation and prediction of fluid-fluid equilibria of carbon dioxide-aromatics and carbon dioxide-dichlorobenzoates binary mixtures. [Article]. *Fluid Phase Equilibria*, 311, 45-53. doi: 10.1016/j.fluid.2011.08.027

Ruiz-Lopez, II, Ruiz-Espinosa, H., Arellanes-Lozada, P., Barcenos-Pozos, M. E., & Garcia-Alvarado, M. A. (2012). Analytical model for variable moisture diffusivity estimation and drying simulation of shrinkable food products. [Article]. *Journal of Food Engineering*, 108(3), 427-435. doi: 10.1016/j.jfoodeng.2011.08.025

Página: 1 de 1 Palabras: 132 Español (México) 90%

Documento1 - Microsoft Word

Inicio Insertar Diseño de página Referencias Correspondencia Revisar Vista EndNote Web PDF

Style: APA 6th

- Career Dev Except Individ
- Caries Research
- Catalysis Today
- Catena
- Catheterization Cardio
- CCTCVM
- Cell**
- Cell Calcium
- Cell Comm and Signaling
- Cell Cycle
- Cell Death Diff
- Cell Metabolism
- Cell Proliferation
- Cell Research
- Cell Tissue Res
- Cell Transplantation
- Cells Tissues Organs
- Cellular Immunology
- Cellular Microbiology
- Cellular Phys Biochem
- Cellular Signalling
- Centaurus
- Cephalalgia
- Cereal Chemistry
- Cereal Science
- Cerebral Cortex
- Cerebrovascular Diseases

Si requiere cambiar el estilo bibliográfico puede hacerlo, solo debe seleccionar otro del menú.

Página: 1 de 1 Palabras: 132 Español (México) 90%

conricyt2012 [Mod... Microsoft Office Pi... EndNote Web 3.3 -... Documento1 - Mi... ES 06:41 p.m.

The screenshot shows the Microsoft Word interface with the EndNote Web ribbon active. The ribbon includes options like 'Find Citations', 'Go to EndNote Web Citations', 'Edit Citation(s)', 'Style: Cell', 'Update Citations and Bibliography', 'Convert Citations and Bibliography', 'Export to EndNote Web', 'Preferences', and 'EndNote Web Help'. The document content includes a list of citations and a red-bordered text box containing the text: 'Los cambios son inmediatos en todas las referencias del documento.'

(Catano-Barrera et al., 2011)

(Ruiz-Lopez et al., 2012)

(Alonso et al., 2012)

Alonso, J.M., Vina, J., Vaquero, D.G., Martinez, G., and Osorio, R. (2012). Analysis and Design of the Integrated Double Buck-Boost Converter as a High-Power-Factor Driver for Power-LED Lamps. *IEEE Transactions on Industrial Electronics* 59, 1689-1697.

Catano-Barrera, A.M., Figueira, F.L., Olivera-Fuentes, C., and Colina, C.M. (2011). Correlation and prediction of fluid-fluid equilibria of carbon dioxide-aromatics and carbon dioxide-dichlorobenzoates binary mixtures. *Fluid Phase Equilibria* 311, 45-53.

Ruiz-Lopez, I., Ruiz-Espinosa, H., Arellanes-Lozada, P., Barcenas-Pozos, M.E., and Garcia-Alvarado, M.A. (2012). Analytical model for variable moisture diffusivity estimation and drying simulation of shrinkable food products. *Journal of Food Engineering* 108, 427-435.

Los cambios son inmediatos en todas las referencias del documento.

Página: 1 de 1 Palabras: 108 Español (México) 90%

conricyt2012 [Mod... Microsoft Office Pi... EndNote Web 3.3 -... Documento1 - Mi... ES 06:43 p.m.

Solicite información de entrenamiento a

fernando.franco@thomsonreuters.com