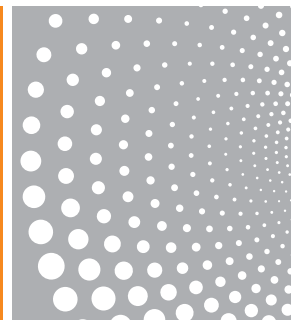


ROCKEFELLER UNIVERSITY

NEW YORK, NY, OCTOBER 2, 2007

RESEARCH POWERHOUSE ROCKEFELLER UNIVERSITY LOOKS TO *UNIVERSITY SCIENCE INDICATORS* DATA TO SUPPORT DECISION-MAKING, FUNDRAISING



“...WE HAVE TO BE CLEAR ABOUT WHERE WE WILL FOCUS AND HOW THESE AREAS OF RESEARCH BUILD ON ONE ANOTHER.”

Case Summary:

A small university that produces high impact research, Rockefeller University needed quantitative data to demonstrate its premier position in the global research community. With *University Science Indicators*, Thomson Reuters provided the insights into research performance that allowed Rockefeller University to track and measure research output and impact, pinpoint emerging trends, and make the crucial decisions that determine the directions for the institution's future.

BACKGROUND: AN AWARD-WINNING RESEARCH POWERHOUSE

New York's Rockefeller University is a high-impact research powerhouse. A leading institution in biomedical research, Rockefeller has been the source for myriad scientific breakthroughs, not to mention the home for 23 Nobel Prize winners and 21 Lasker Award winners. Rockefeller's influence and reputation resonate across the globe.

“Our board of trustees must always consider how we are going to develop the campus — which areas are underdeveloped or under-represented, the areas in which we should be looking for new faculty members, and even the kinds of laboratories we need.”

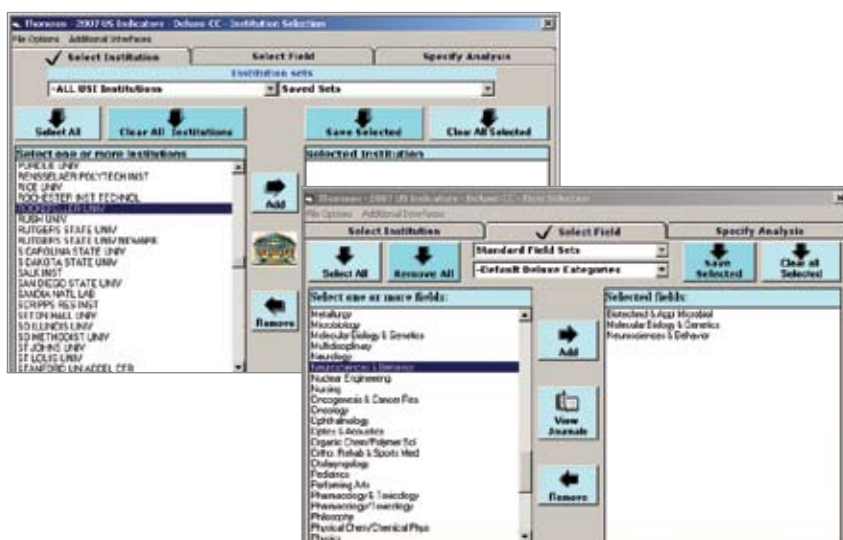
For a quantitative demonstration of the institution's research performance, the Rockefeller University decision makers turn to data from Thomson Reuter's *University Science Indicators*.

BUSINESS ISSUE: MEASURING ACHIEVEMENT AND INFORMING DECISION-MAKING

“We are a small university, but our research is very high impact,” said Carol Feltes, Rockefeller University librarian. “We're known around the world as a place where extraordinary biomedical research is conducted.

But with this success comes a major challenge — quantifying the reach and impact of its research. To maintain the institution's high quality, the university's leadership team needed comprehensive data on research output and influence.

“Our administrators have to make choices,” said Feltes. “Biomedical research is our focus here at Rockefeller, and within that broad field we have to be clear about where we will focus and how these areas of research build on one another.”



An easy-to-use interface for in-depth analysis. Analyze performance by institution, field, output, impact, field baselines, and share.





Trend graph: Institutional impact. See how institutional impact - average cites per paper - can vary over time.



Trend graph: Institutional output. Trends in publication output provide useful insights into an institution's research activity.

THE THOMSON REUTERS SOLUTION

University Science Indicators is an easy-to-use database of research performance measures for universities and research institutions. Covering more than 300 U.S. institutions, *University Science Indicators* enables benchmarking and ranking against peer, as well as target, institutions.

Based on the unique and authoritative publication and citation statistics compiled by Thomson Reuters, *University Science Indicators* contains the number of Thomson Reuters-indexed papers from each university, along with citation counts and other citation impact metrics available nowhere else.

At Rockefeller, using this insight into its research performance has become integral to the decision-making process.

University Science Indicators data inform many administrative and budgetary decisions — from equipment and facilities, to the university's staffing allocations.

Moreover, with the ability to measure research output and impact and identify emerging trends, the institution's leadership can make crucial decisions about the institution's future.

In addition to its use in decision-making, *University Science Indicators* has proved valuable in fund-raising. Rockefeller's data from *University Science Indicators* are an important tool for working with external funders and prospective research partners.

"Anecdotally, we can point to our many Nobel Prize winners and talk about the high quality of our research, but *University Science Indicators* gives us the data to actually show the global reach of our research."

"Our donors help us create new, state-of-the-art labs, because the citation data help them to appreciate our research," said Feltes. "By seeing how the rest of the world uses and needs our research, they are reassured that they are making a good investment with benefits that reach far beyond Rockefeller's halls."

CONCLUSION

Whether they are talking to donors, making decisions about budget and facilities, or wrestling with critical choices about the direction of the institution, Rockefeller University administrators rely on comprehensive quantitative data on research output and impact, thanks to *University Science Indicators*, its Thomson Reuters solution.

Scientific Head Offices

Americas

Philadelphia +1 800 336 4474
+1 215 386 0100

Europe, Middle East and Africa

London +44 20 7433 4000

Asia Pacific

Singapore +65 6411 6888
Tokyo +81 3 5218 6500

For a complete office list visit:

scientific.thomsonreuters.com/contact

AG 07 8106-01 C CS

Copyright ©2008 Thomson Reuters



THOMSON REUTERS