



RESEARCH EVALUATION IN CZECH REPUBLIC BASED ON THOMSON REUTERS DATA

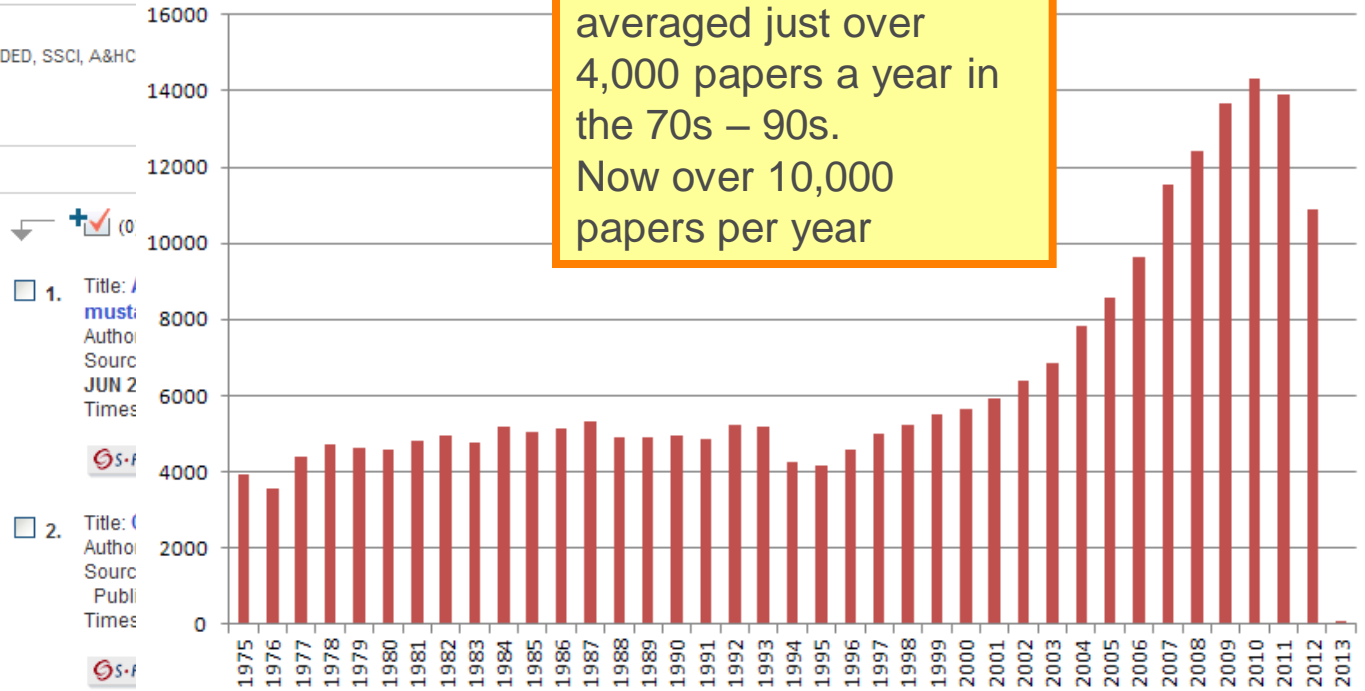
CHANGING NATURE OF CZECH RESEARCH

Web of Science® now with books

Results cu=Czech*
 Timespan=All Years. Databases=SCI-EXPANDED, SSCI, A&HC
 Lemmatization=On
[Create Alert /](#) [RSS](#)

Results: **256,926**

Czech researchers averaged just over 4,000 papers a year in the 70s – 90s. Now over 10,000 papers per year



0

1. Title: / must: Author: Sourc JUN 2 Times

2. Title: (Author: Sourc Publ Times

3. Title: **Storage induced changes of potato properties as detected by DMA**
 Author(s): Blahovec, Jiri; Lahodova, Magdalena
 Source: LWT-FOOD SCIENCE AND TECHNOLOGY Volume: 50 Issue: 2 Pages: 444-450 DOI: 10.1016/j.lwt.2012.08.026 Published: MAR 2013
 Times Cited: 0 (from Web of Science)

[S-F-X](#) [Full Text](#) [View abstract](#)

Refine Results

Search within results for

[Search](#)

Web of Science Categories [Refine](#)

- CHEMISTRY MULTIDISCIPLINARY (19,158)
- MATERIALS SCIENCE MULTIDISCIPLINARY (11,383)
- BIOCHEMISTRY MOLECULAR BIOLOGY (11,015)
- CHEMISTRY ANALYTICAL (9,017)
- CHEMISTRY PHYSICAL (8,642)
- [more options / values...](#)

Document Types [Refine](#)

- ARTICLE (190,849)
- PROCEEDINGS PAPER (40,409)
- MEETING ABSTRACT (22,496)
- REVIEW (8,073)
- NOTE (5,983)
- [more options / values...](#)

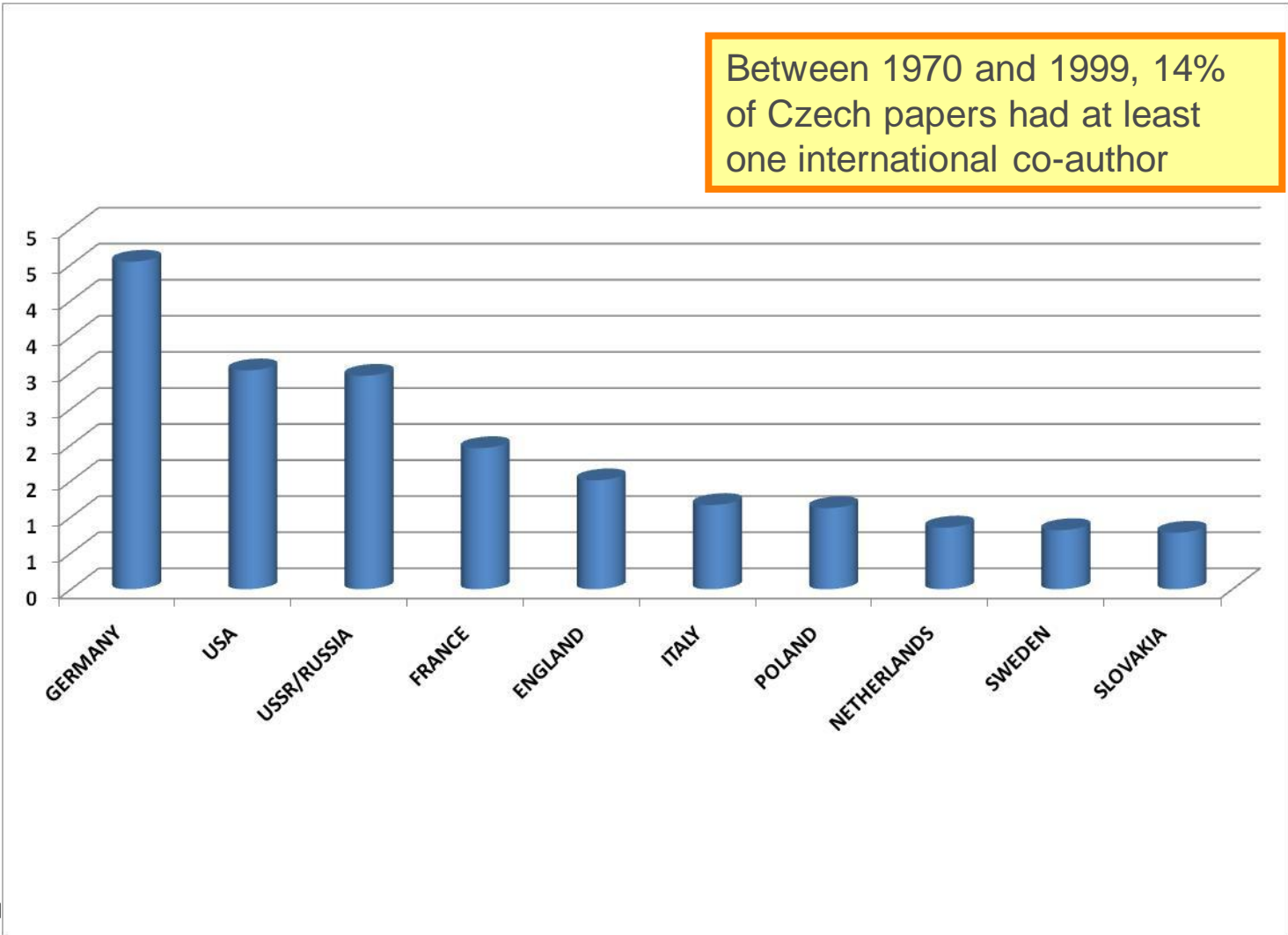
Research Areas

Authors

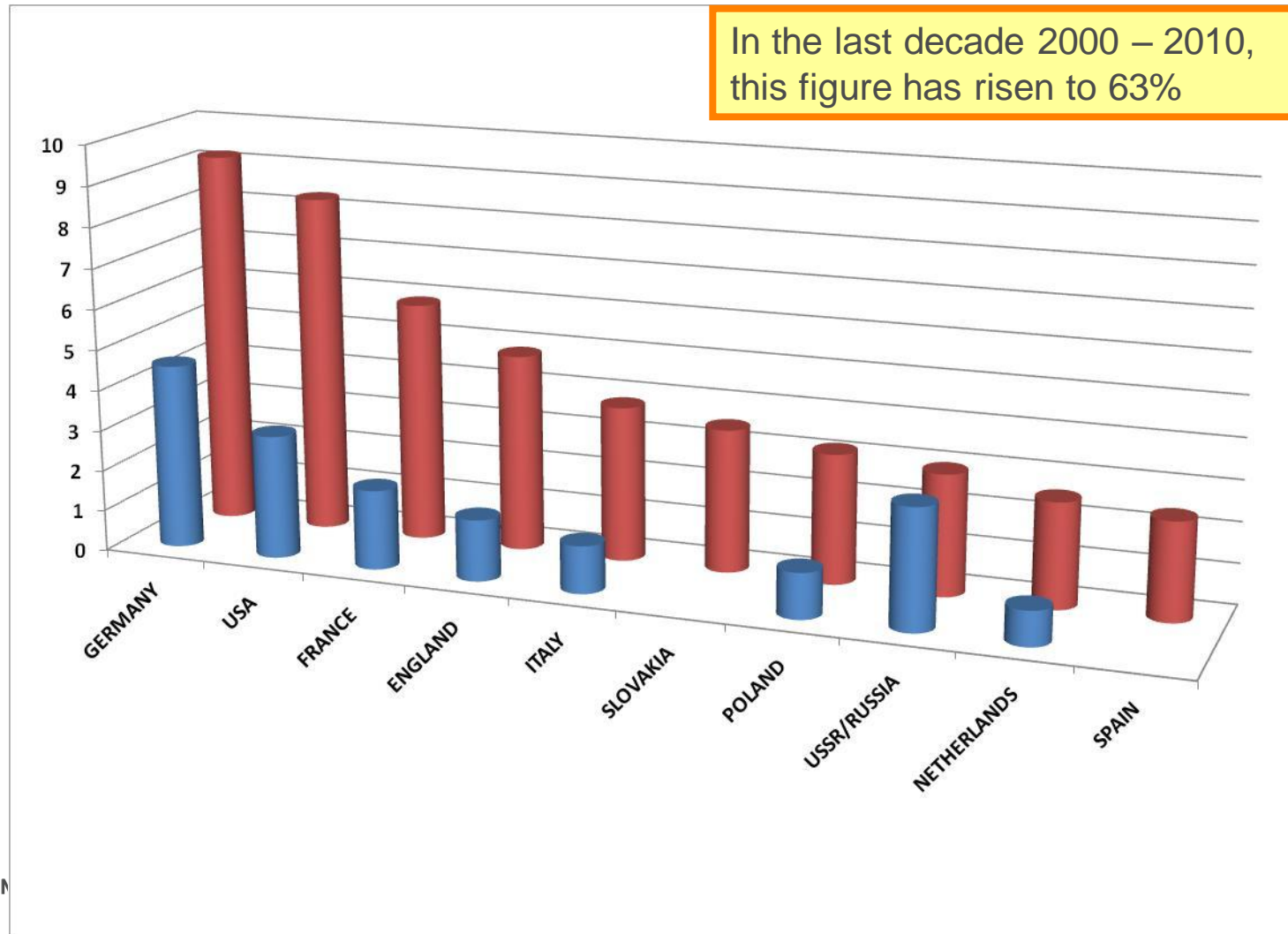
Group Authors

CHANGING NATURE OF CZECH RESEARCH INTERNATIONAL COLLABORATION

Between 1970 and 1999, 14% of Czech papers had at least one international co-author

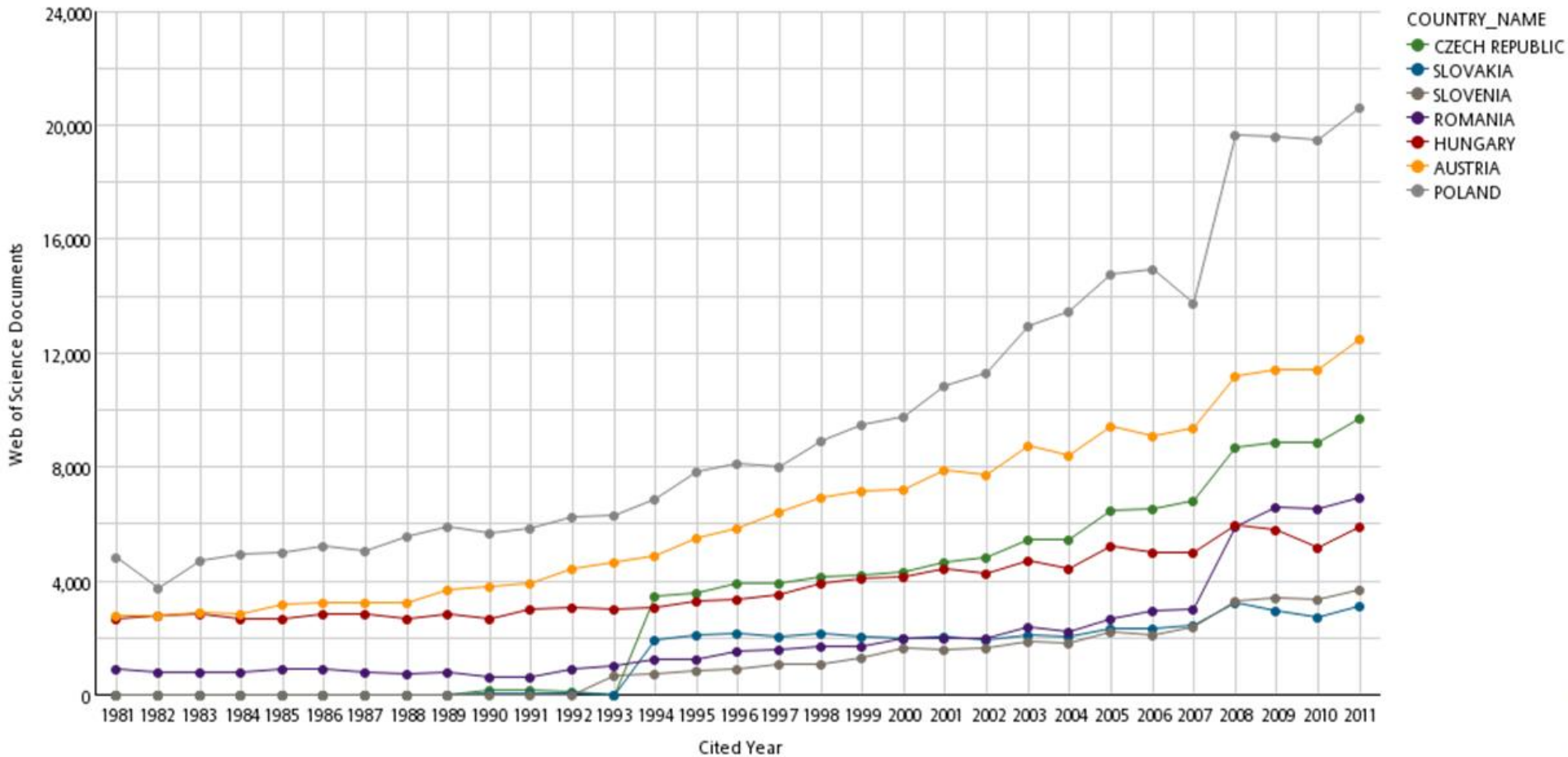


CHANGING NATURE OF CZECH RESEARCH INTERNATIONAL COLLABORATION



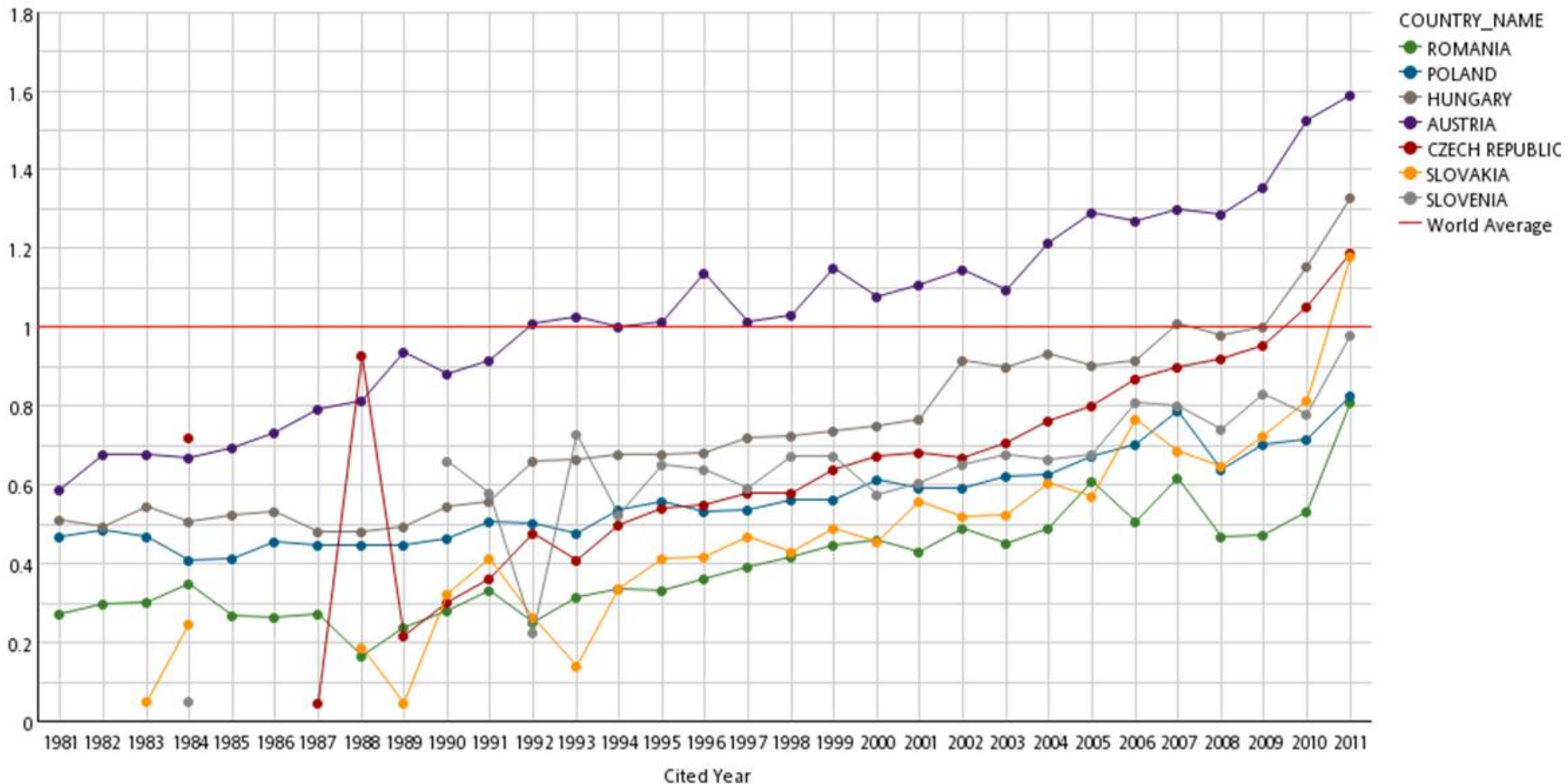
SCIENTIFIC RESEARCH PRODUCTIVITY IN CENTRAL EUROPE

Web of Science Documents 1981-2011



SCIENTIFIC RESEARCH IMPACT IN CENTRAL EUROPE

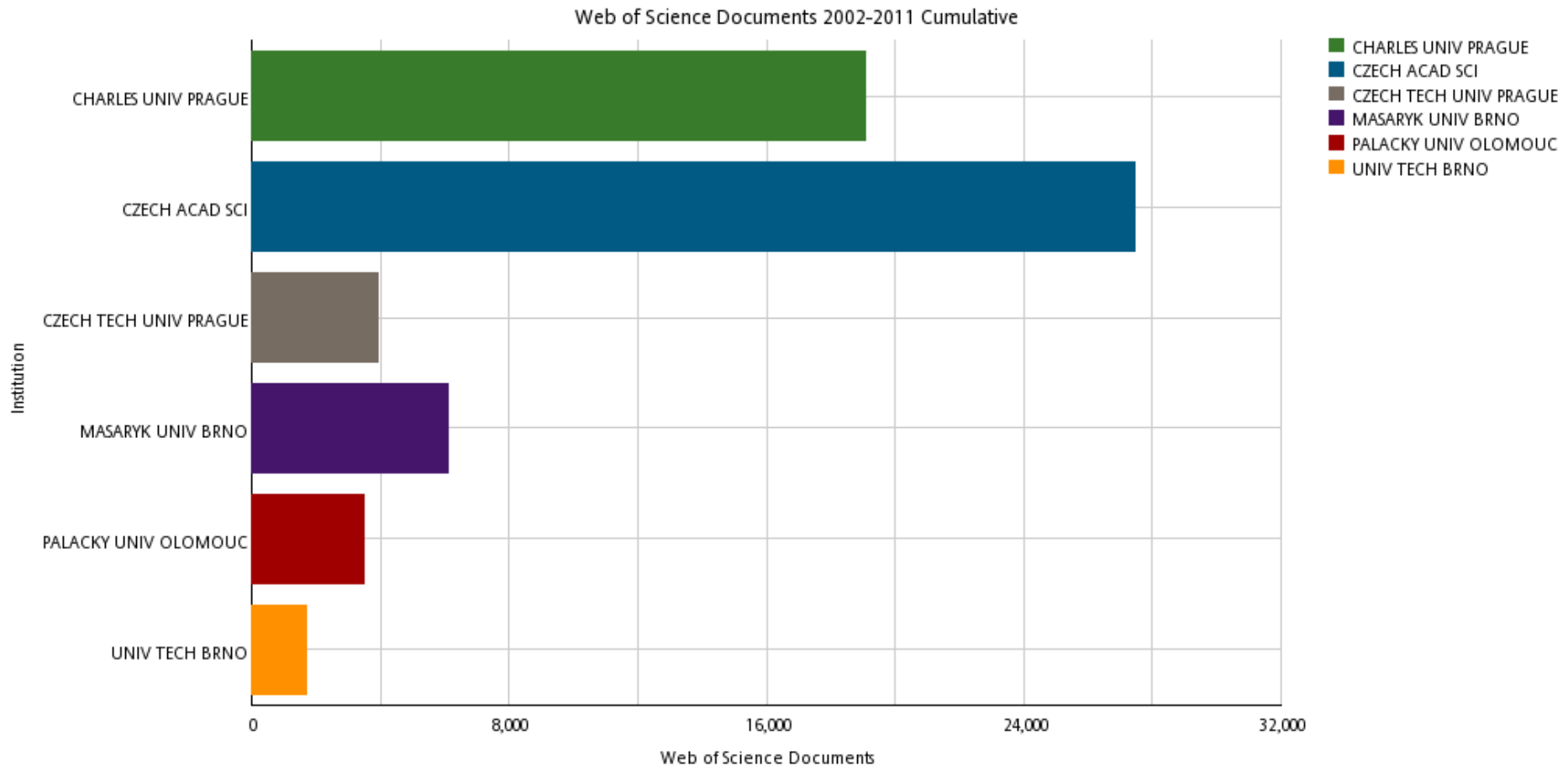
Impact Relative To World 1981-2011



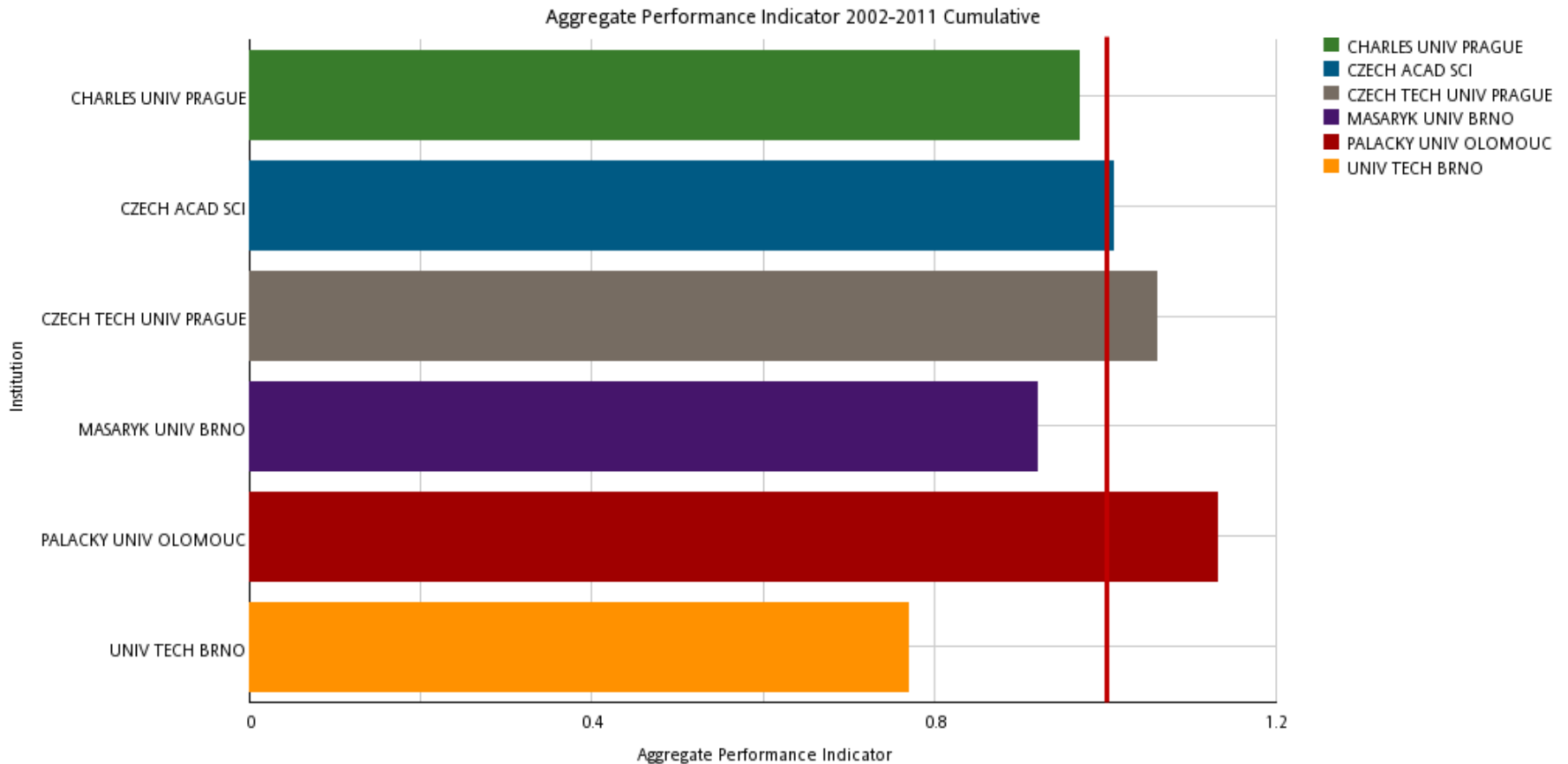
CZECH RESEARCH BY OUTPUT AND IMPACT

Subject Area	% Documents in Subject Area	Web of Science Documents	Cites per Document (Impact)	Impact Relative to Subject Area
Plant & Animal Science	1.2	6,698	6.3	0.89
Space Science	1.08	1,325	10.19	0.74
Mathematics	1.07	2,909	2.89	0.88
Chemistry	0.99	11,876	8.52	0.8
Physics	0.95	8,969	7.84	0.95
Microbiology	0.91	1,556	8.84	0.62
Agricultural Sciences	0.9	1,955	4.05	0.61
Biology & Biochemistry	0.89	5,003	9.11	0.58
Materials Science	0.86	4,080	5.21	0.74
Geosciences	0.82	2,359	6.81	0.75
Economics & Business	0.79	1,300	1.47	0.24
Environment/Ecology	0.74	2,101	10.06	0.96
Computer Science	0.59	1,570	2.42	0.64
Molecular Biology & Genetics	0.58	1,640	14.22	0.63
Pharmacology & Toxicology	0.58	1,124	10.08	0.89
Engineering	0.56	4,726	4.5	0.96
Immunology	0.45	557	12.78	0.61
Clinical Medicine	0.39	8,400	11.44	0.98
Neuroscience & Behavior	0.29	867	12.53	0.71
Psychiatry/Psychology	0.26	644	4.32	0.41

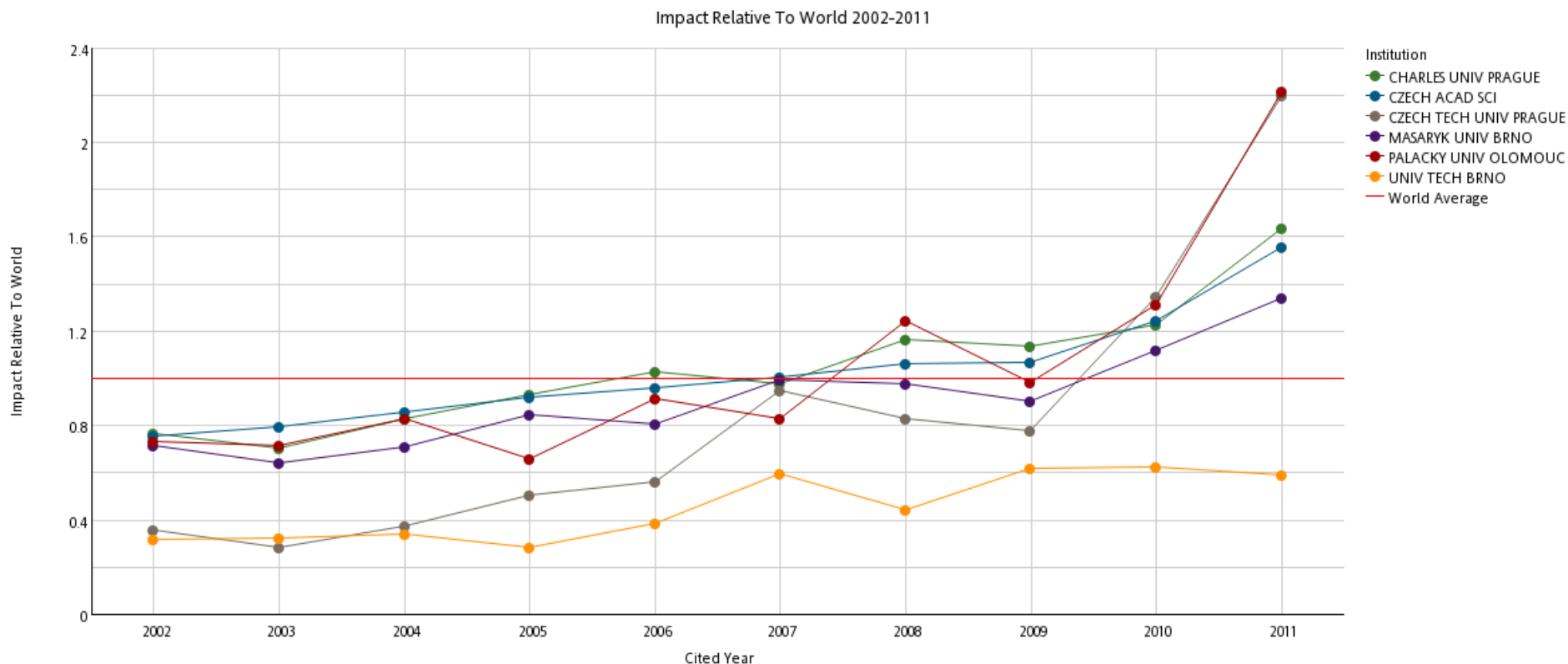
COMPARING PERFORMANCE OF TOP CZECH INSTITUTIONS



COMPARE YOUR INSTITUTION'S PERFORMANCE AGAINST GLOBAL PEERS



INSTITUTIONAL COMPARISONS





DĚKUJEME!



THOMSON REUTERS