

THOMSON REUTERS WEB OF SCIENCE™

PRESERVING THE MOST CRITICAL SCHOLARLY RESEARCH
CURATING 100 YEARS OF CONTENT FOR 50 YEARS.



20,389 JOURNAL TITLES FROM REGIONAL
AND INTERNATIONAL PUBLISHERS

OVER 2.6 MILLION DATA STUDIES
& DATA SETS

60,000 SCHOLARLY BOOKS

23.6 MILLION INVENTIONS

15,000 CONFERENCE PROCEEDINGS
ANNUALLY

OVER 51.8 MILLION PATENTS



THOMSON REUTERS™

UNBIASED AND TRUSTED INFORMATION

Thomson Reuters Web of Science™ intelligently guides you through the search and discovery process from a single platform. You can search across data, books, journals, patents, and more. Find, analyze, and share the most relevant information in science, social science, arts and humanities. Discover emerging trends to inform your research, and identify collaborators with influence.

Web of Science provides tens of millions of records of curated research content. Our careful selection process ensures you get the most reliable, integrated, multidisciplinary information from the global research community to complete your research picture. And it's all connected through standard vocabulary, linked content and citation metrics from multiple sources.

Embedded tools help you track research and citations across time — showing the value and impact of research — and bring to light references and articles of interest. Powerful analysis tools quickly add context and insight to search results and guide you through the discovery process.

Web of Science utilizes carefully selected information about the latest breaking and regionally driven discoveries. We work hard to provide unbiased, standardized information by:

- Utilizing standardized vocabulary
- Indexing from cover-to-cover
- Capturing 65 million cited references annually
- Indexing 100% of cited references
- Linking all Web of Science articles with Times Cited
- Unifying all cited reference formats into one standard format to ensure quality controlled data

WHAT IT DELIVERS

- Objectively selected content
- The world's leading citation databases
- Powerful search and navigation options
- Seamless, integrated search across all content
- Consistent indexing with a common vocabulary
- Convenient results management options
- Integration with ResearcherID and EndNote
- 250 + subject categories
- More than 100 years of backfiles

WHAT YOU CAN DO

- Access the highest quality, curated, multidisciplinary content
- Access baselines and data for use by internal systems or analysts
- Pinpoint subject-specific and regional research
- Identify emerging trends
- Discover the most relevant research to inform your work
- Identify qualified collaborators
- Target high-impact journals for publishing

MORE THAN JUST SCIENCE

SEARCH AND REFINE BY DISCIPLINE, CONTENT TYPE, OR DATABASE.

- Science Citation Index® Expanded
- Social Sciences Citation Index®
- Arts & Humanities Citation Index®
- Conference Proceedings Citation Index®
- Book Citation Index
- Data Citation Index
- BIOSIS Citation Index®
- Current Chemical Reactions
- Index Chemicus
- Current Contents Connect
- Zoological Record®
- Derwent Innovations Index
- Medline
- FSTA - the food science resource

ANALYZING & ADDING CONTEXT

ANALYZE TOOL

Discover trends and patterns in research that aren't immediately apparent, but are vital.

CITED REFERENCE SEARCHING

Search backward and forward in time to uncover prior influences and subsequent developments of high impact research.

RELATED RECORDS

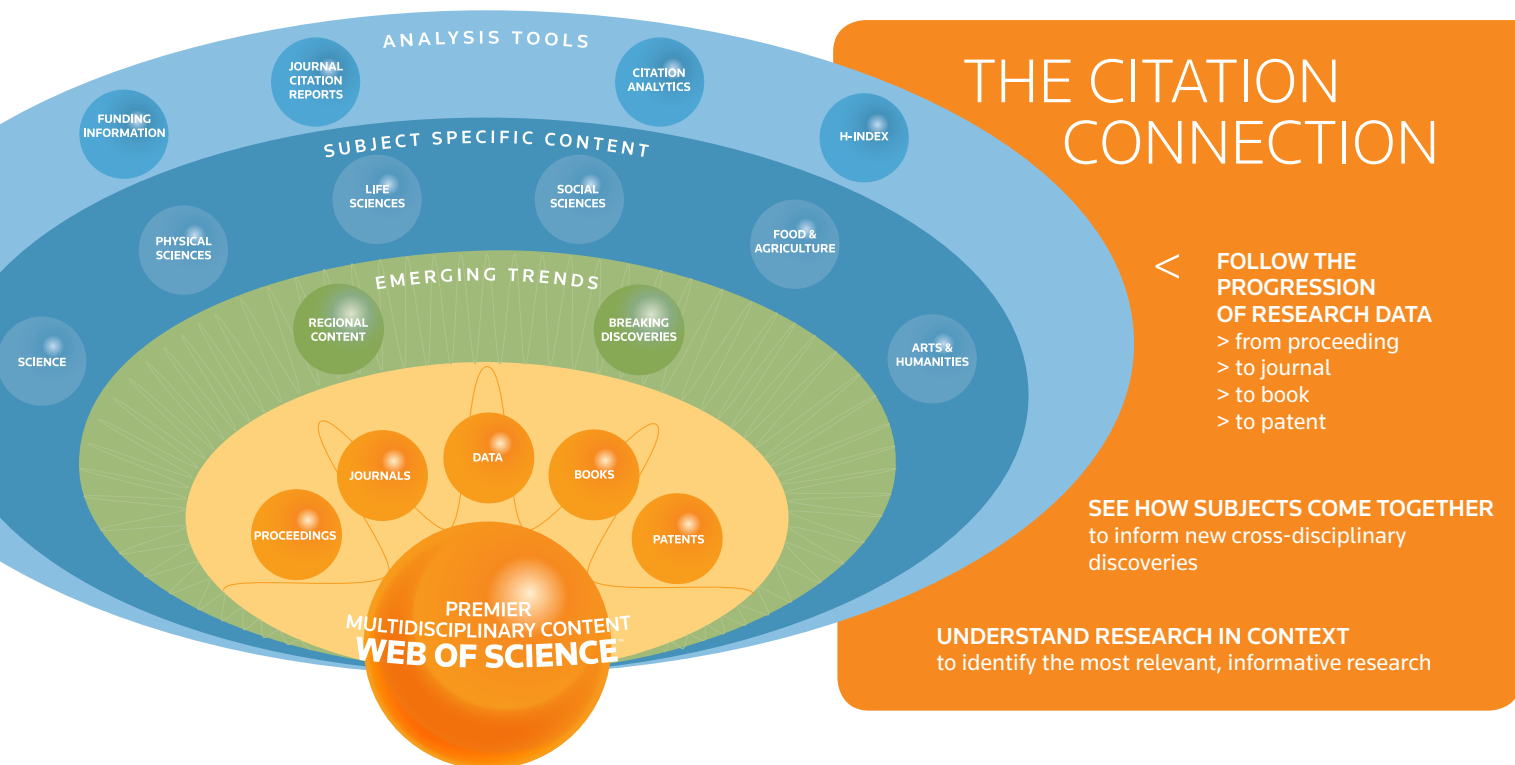
Search across disciplines to discover information often missed through keyword searches alone. Track the influence and impact of your research; follow the history or methodology of an idea from its first mention to the present day.

CITATION REPORT

Capture citation activity and identify citation trends graphically within and across all citation resources.

CITATION MAPPING

Create a visual representation of citation relationships to track an article's cited and citing references through two generations to discover an article's wider relationships.



THE MOST IMPACTFUL LITERATURE ACROSS ALL AREAS, REGIONS, AND CONTENT TYPES.

WEB OF SCIENCE™ CORE COLLECTION

The world-leading citation databases provide authoritative, multidisciplinary coverage from more than 12,000 high impact research journals worldwide, including Open Access journals.

- **ARTS & HUMANITIES CITATION INDEX** — available back to 1975
Provides researchers, administrators, faculty, and students with quick, powerful access to the bibliographic and citation information for journal articles in the arts & humanities. Find research data, analyze trends, journals, and researchers, and share findings.
- **SCIENCE CITATION INDEX** — available back to 1900
Offers access to the bibliographic and citation information researchers, administrators, faculty, and students need to find research data, analyze trends, journals and researchers, and share their findings.
- **SOCIAL SCIENCES CITATION INDEX** — available back to 1900
Gives students, faculty, researchers, and administrators easy access to citation and bibliographic information to discover, analyze research trends, journals and colleagues, and share their findings.

CONFERENCE PROCEEDINGS CITATION INDEX — available back to 1990

The fastest way to gain access to cutting edge, impactful research derived from conference proceedings literature.

BIOSIS CITATION INDEX — available back to 1926; citation data to 2005

The world's most comprehensive reference database for life science research. It includes over 23 million bibliographic records, plus cited references to primary journal literature on vital biological research, medical research findings, and discoveries of new organisms. It also covers original research reports and reviews in traditional biological and biomedical areas.

BOOK CITATION INDEX — available back to 2005
Covering nearly 60,000 titles, and connecting the wealth of references in authoritative books to the greater citation index, allowing arts & humanities and social sciences scholars to navigate from a new starting point.

DATA CITATION INDEX

A single point of access to search and assess quality research data from data repositories across disciplines and around the world. Data can be viewed within the context of the scholarly research it supports, adding perspective that makes it easier to uncover connections faster.

CURRENT CONTENTS CONNECT®

Updated daily, this premier resource provides unparalleled access to complete tables of contents, abstracts, and bibliographic information from the most recently published journals and books.

ZOOLOGICAL RECORD® — available back to 1864

The unofficial register of animal names, also including all modern animal science research from biodiversity to wildlife management. Determine the first appearance of an animal in the published literatures, track classification changes, and monitor developments in ecology, conservation, and wildlife preservation. It is the definitive animal biology resource and the world's leading taxonomic reference.

DERWENT INNOVATIONS INDEX® — available back to 1963

Conduct powerful patent and citation searches of inventions in chemical, electrical, electronic, and mechanical engineering. Use additional descriptive information and coding to quickly grasp a patent's significance and its relationship to other patents. Derwent Innovations Index merges the value-added patent information from Derwent World Patents Index with the patent citation information from Derwent Patent Citation Index®.

FSTA — The Food Science Resource — available back to 1969

This R&D database provides thorough coverage of pure and applied research in food science, food technology, and food-related human nutrition. It is the largest food science database currently available, with more than one million records from journals, books, proceedings, reports, theses, patents, standards, and legislation. Its coverage explores the complete food manufacturing cycle, from initial market research to final packaging.

MEDLINE® — available back to 1950

The premier bibliographic database of the U.S. National Library of Medicine® (NLM®), covering life sciences, biomedicine, bioengineering, public health, clinical care, and plant and animal science. It includes references from journals, newspapers, magazines, and newsletters.

ENDNOTE

This online resource for reference management and bibliography creation is fully integrated with Web of Science, and can be configured as part of your subscription. Through this integration, Web of Science references will automatically display their Times Cited Count, links to Related Records, and full-text links.

Learn more at endnote.com/basic/compare.

Adding an EndNote site license.

An EndNote site license lets you provide a single solution that can support your entire campus - whether it's being used by students working on term papers or researchers in the early stages of research careers, faculty members planning their syllabi or senior researchers applying for grants. Users can manage large reference libraries including PDFs, configure flexible grouping options to store reference materials, access even more citation styles and databases, and more.

FIND OUT MORE ABOUT WEB OF SCIENCE

To learn more, visit wokinfo.com or contact the Thomson Reuters office nearest you.

Scientific Head Offices

Americas

Philadelphia +1 800 336 4474
+1 215 386 0100

Europe, Middle East and Africa

London +44 20 7433 4000

Asia Pacific

Singapore +65 6775 5088
Tokyo +81 3 4589 3100

For a complete office list visit:

ip-science.thomsonreuters.com/contact

